

Amazingly Affordable. Unsurpassed Quality. **Lovejoy's Stainless Steel Jaw Coupling**

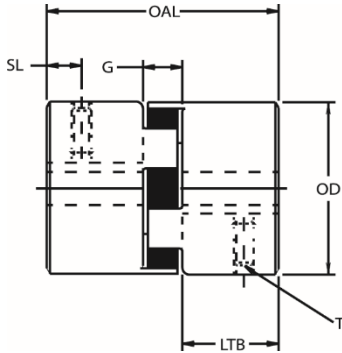
In applications that require the use of stainless-steel components, Lovejoy's SS-type jaw coupling offers affordability and availability.

- Hubs with finished bores are passivated against rust
- Available in 5 sizes – either rough bore or finished bore and keyway combinations
- Select from bore sizes 1/4"(SS075) to 1-7/8"(SS150)
- Interchangeable with all hub sizes standard for the L-line and AL-line products
- Hubs can be used with inserts in 4 different materials: Buna-N (Sox), Urethane, Hytrel, and Bronze
- Use with Lovejoy's Jaw-in-Shear to create a completely stainless steel in-shear coupling





Stainless Steel Jaw Couplings



Stainless Steel Coupling Dimensional Data - Inch

Size	Max Bore in	Max Bore mm	Outside Diameter (OD)	Overall Length (OAL)	Gap (G)	Length Thru Bore (LTB)	Hub Diameter	Set Screw Location (SL)	Set Screw Size (T)
SS075	0.875	22	1.75	2.13	0.50	0.82	1.75	0.31	1/4-20
SS095	1.125	28	2.11	2.51	0.52	1.00	2.11	0.44	5/16-18
SS100	1.375	35	2.54	3.48	0.71	1.38	2.54	0.44	5/16-18
SS110	1.625	42	3.32	4.22	0.88	1.68	3.32	0.75	3/8-16
SS150	1.875	48	3.75	4.50	1.00	1.75	3.75	0.75	3/8-16

Stainless Steel Coupling Performance Data

Size	in-lbs	Torque Rating		HP/100	Max Bore		Max RPM
		in-lbs	Nm		in	mm	
SS075	Sox	90.00	10.17	0.140	0.75	19	11,000
	Urethane	135.00	15.26	0.280			3,600
	Hytrel	227.00	25.65	0.360			3,600
	Bronze	227.00	25.65	0.360			250
SS095	Sox	194.00	21.92	0.310	1.12	28	9,000
	Urethane	291.00	32.90	0.465			3,600
	Urethane(JIS)	335.00	38.00	0.530			9,200
	Hytrel	561.00	63.38	0.890			3,600
	Bronze	561.00	63.38	0.890			250
SS100	Sox	417.00	47.11	0.660	1.38	35	7,000
	Urethane	477.00	53.90	1.320			3,600
	Urethane(JIS)	560.00	63.00	0.890			7,700
	Hytrel	1134.00	128.12	1.800			3,600
	Bronze	1134.00	128.12	1.800			250
SS110	Sox	792.00	89.48	1.260	1.62	42	5,000
	Urethane	1188.00	134.00	1.890			3,600
	Urethane(JIS)	1090.00	123.00	1.730			5,900
	Hytrel	2268.00	256.25	3.600			5,000
	Bronze	2268.00	256.25	3.600			250
SS150	Sox	1240.00	140.10	2.000	1.88	48	5,000
	Urethane	1860.00	210.00	3.000			3,600
	Urethane(JIS)	1810.00	205.00	2.870			5,200
	Hytrel	3708.00	418.95	5.900			5,000
	Bronze	3708.00	418.95	5.900			250

Stainless Steel Hub UPC Part Numbers (Prefix is 685144)

Size	RSB	1/4	1/2	5/8	3/4	7/8	1	1-1/8	1-3/8	1-1/2
SS075	70001	70006	70007	70008	70009	70010	—	—	—	—
SS095	70002	70011	70011	70012	70013	70014	70015	70016	—	—
SS100	70003	—	—	—	70017	70018	70019	70020	70022	—
SS110	70004	—	—	—	—	—	70023	70024	70026	70027
SS150	70005	—	—	—	—	—	70029	70030	70032	70033