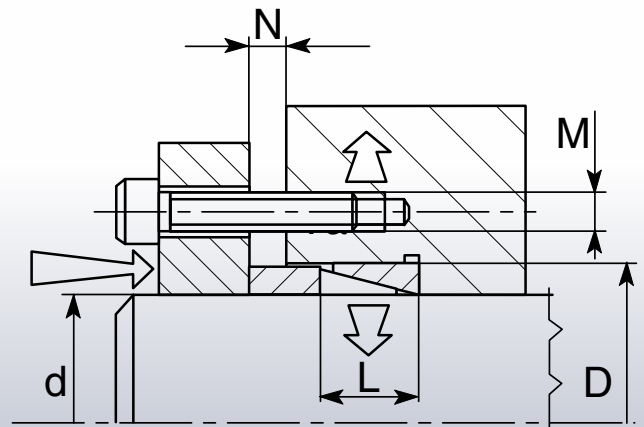
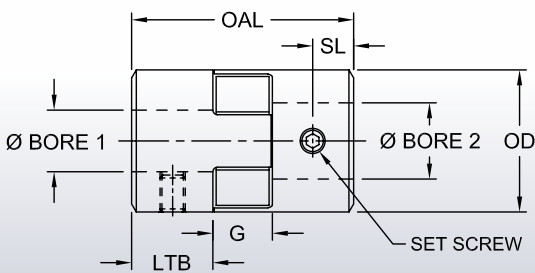
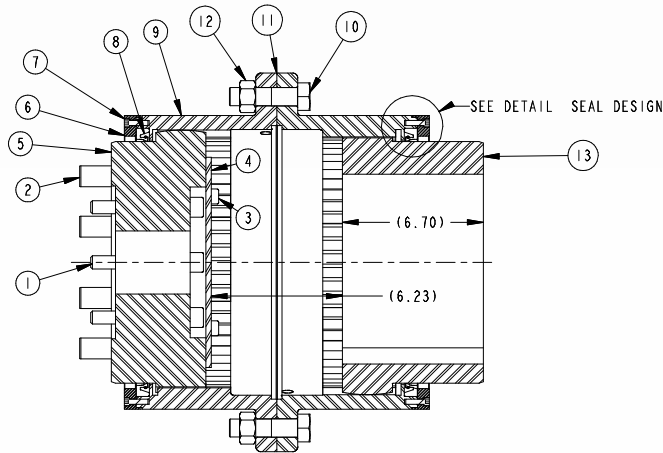


## Engineering Data

### IN THIS SECTION:

- Misalignment Fundamentals
- U.S. Inch Clearance / Interference Fit Standards
- Keyway Recommendations
- Lovejoy, Inc Metric Clearance / Interference Fit Standards
- IEC Motor and Nema Motor Frame Standards





BY TIMKEN

# Warnings



## WARNING

***Failure to observe the following warnings could cause the power transmission product to break and parts to be thrown with sufficient force to cause serious injury or death.***

**Selection.** Do not exceed catalog ratings. Refer to the Lovejoy catalog for proper selection, sizing, horsepower, torque range, and speed range of these products.

**Installation.** Proper maintenance, handling, and shop practices are critical. Follow all installation instructions included with the product and provided by your equipment manufacturer, and all applicable federal, state, and local regulations concerning the safe operation and maintenance of manufacturing equipment.

**Operation.** Avoid sudden shock loads during start up and operation.

Do not operate a coupling assembly with improper alignment or bolt torque or with damaged or worn elastomeric elements. Inspect the assembly for these conditions shortly after initial operation and periodically thereafter.

The coupling assembly should operate quietly and smoothly. If the coupling assembly vibrates or makes a beating sound, shut down the equipment immediately and recheck the alignment.

## Disclaimer

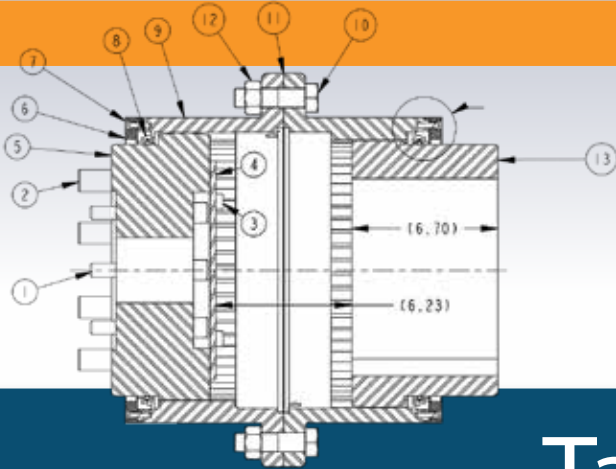
This catalog is provided solely to give you analysis tools and data to assist you in your product selection. Product performance is affected by many factors beyond the control of Lovejoy. Therefore, you must validate the suitability and feasibility of all product selections for your applications.

**Lovejoy does not manufacture or sell power transmission products for elevators, man lifts, or other devices that carry people. We make no representation or warranty concerning such uses and disclaim all liability for harm that might result from the use of our products in those applications.**

Lovejoy products are sold subject to Lovejoy terms and conditions of sale (view at [www.lovejoy-inc.com/resources](http://www.lovejoy-inc.com/resources)), which include our limited warranty and remedy. Please consult with your Lovejoy engineer for more information and assistance.

Every reasonable effort has been made to ensure the accuracy of the information in this writing, but no liability is accepted for errors, omissions or for any other reason.

If you have any questions, contact the Lovejoy Engineering Department at 1-630-852-0500 or email [appleng@lovejoy-inc.com](mailto:appleng@lovejoy-inc.com).



## Table of Contents

	<b>Running Page No.</b>	<b>Section Page No.</b>
Misalignment Fundamentals .....	490	ED-4
HP, RPM, Kilowatts and Torque > Overview .....	492	ED-6
Overhung Loads > Overview .....	493	ED-7
Formulas / Equations > Overview .....	494	ED-8
Sleeve and Flexible Element > Chemical Resistance Chart .....	495	ED-9
U.S. Customary Inch / Clearance-fit and Interference-fit > Bore and Keyway Standards .....	496	ED-10
Inch / Metric One Key > Recommended Keys .....	501	ED-15
Inch / Metric Keys and Metric Shaft Bores .....	502	ED-16
Lovejoy, Inc. Customary Metric / Clearance-fit and Interference-fit > Bore and Keyway Standards .....	503	ED-17
IEC Motor Frames > Dimensional Data .....	506	ED-20
IEC Motor Frame Drawings > Dimensional Data .....	507	ED-21
Nema Quick Reference Chart – Inch > Dimensional Data .....	508	ED-22
Nema Motor Frame > Dimensional Data .....	509	ED-23

## Misalignment Fundamentals

### A Brief Tutorial on Misalignment

The function of a coupling is to connect driving and driven equipment. In addition, a coupling serves to protect costly equipment from the effects of misalignment, shock loads, vibration and shaft end float. Of these factors, the most common is misalignment and end float (also known as axial misalignment).

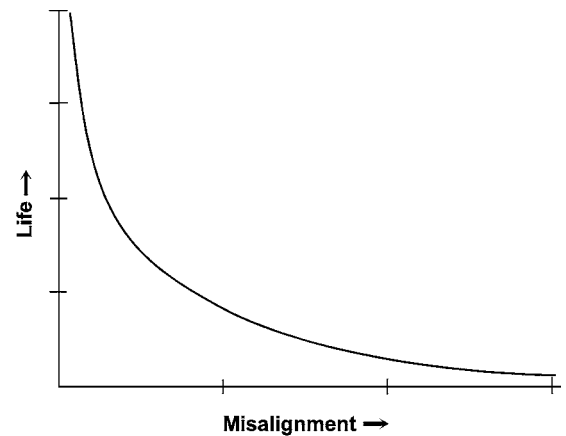
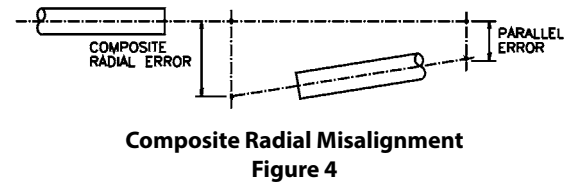
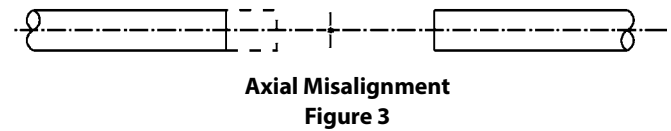
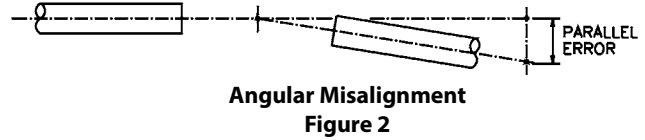
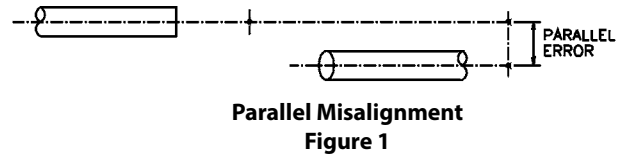
Misalignment is a condition created by two shafts whose axes are not in the same straight line. There are three forms of misalignment: parallel, angular, or the combination of the two. End float is the relative motion of two shaft ends.

Parallel misalignment occurs when the axes of the connected shafts are parallel, but not in the same straight line (figure 1). Angular misalignment occurs when the axes of the shafts intersect at the center point of the coupling (figure 2). End float occurs when one shaft moves along its axis relative to the other shaft. (figure 3)

Misalignment can result from a combination of manufacturing tolerances, poor installation practices, thermal growth or shrinkage, foundation movement, and/or component wear. The combination of angular and parallel misalignment within a system may be more detrimental to the coupling and equipment than either of the individual misalignment (figure 4). Axial misalignment- result of either thrust loads, reaction loads, or heat generated movement - compounds the problem. Not understanding the amount of misalignment that the coupling must handle or installing a coupling where it exceeds a maximum rated misalignment can result in premature coupling failure and/or significant equipment damage.

### Misalignment and Coupling Failure

The life expectancy of a coupling is affected by the degree of misalignment. The larger the misalignment, the shorter the life of the coupling as shown in figure 5. Misalignment may cause heat generation, fatigue, and an increase in wear in bearings of the drive and driven components.



### WARNING

**Failure to follow these cautions could create a risk of injury.**

You must refer to page ED-2 for Important Safety Instructions and Precautions for the selection and use of these products.  
Failure to follow the instructions and precautions can result in severe injury or death.

## Misalignment Fundamentals

### When Misalignment Can Not be Measured

When it is not possible to measure the misalignment of a system, or in designing a new system, the following method can be used to estimate angular, parallel and combined misalignment. Each type of misalignment is first calculated and then the results are combined.

To calculate the maximum angular misalignment, the distance (L) and angle (a) must be known or estimated (see example below). First, calculate the angular misalignment noting the critical plane or midpoint of the shaft ends. Second, using the maximum parallel misalignment, be sure to consider both horizontal and vertical directions (figure 3). Maximum parallel misalignment occurs when the shafts are diagonally opposed. Third, combine the results.

These results can then be compared to the performance limit expressed in the tables for each Lovejoy coupling type.

#### Worked example

Calculate the worst possible composite alignment misalignment when:

$$\alpha_1 \text{ max} = \pm 0.4^\circ$$

$$\alpha_2 \text{ max} = \pm 0.4^\circ$$

$$L \text{ max} = 3 \text{ in}$$

$$L \text{ max} = 75 \text{ mm (LH and RH shafts)}$$

$$P_1 \text{ max} = 0.008 \text{ in}$$

$$P_1 \text{ max} = 0.2 \text{ mm}$$

$$P_2 \text{ max} = 0.008 \text{ in}$$

$$P_2 \text{ max} = 0.2 \text{ mm}$$

$$\begin{aligned} 1. \text{ Worst possible angular misalignment (figure 1)} &= \alpha_1 + \alpha_2 \\ &= 0.4^\circ + 0.4^\circ \\ &= 0.8^\circ \end{aligned}$$

$$2. \text{ Maximum radial misalignment (figure 2)} = R_1 + R_2$$

$$\text{Since } \alpha_1 \text{ and } \alpha_2 \text{ are equal, } R_1 = R_2$$

$$\begin{aligned} \text{Calculate for } 2(R_1) &= 2 (\tan \alpha_1 \times L) \\ &= 2 (\tan 0.4^\circ \times 75) \\ &= 2 (\tan 0.4^\circ \times 3) \\ &= 2 (0.007 \times 3) \\ &= 0.042 \text{ in} \end{aligned}$$

$$\begin{aligned} &= 2 (\tan \alpha_1 \times L) \\ &= 2 (\tan 0.4^\circ \times 75) \\ &= 2 (0.007 \times 75) \\ &= 1.05 \text{ mm} \end{aligned}$$

$$3. \text{ Maximum parallel misalignment } P_3 \text{ (figure 3)} = \sqrt{P_1^2 + P_2^2}$$

$$\begin{aligned} &= \sqrt{0.008^2 + 0.008^2} &= \sqrt{0.2^2 + 0.2^2} \\ &= 0.0113 \text{ in} &= 0.28 \text{ mm} \end{aligned}$$

$$4. \text{ Worst possible misalignment (figure 4)} R_C = R_1 + R_2 + P_3$$

$$\begin{aligned} &= 0.042 + 0.0113 &= 1.05 + 0.28 \\ &= 0.0533 \text{ in} &= 1.33 \text{ mm} \end{aligned}$$

Note: ■ Relatively minor angular misalignments can produce disproportionate radial misalignments. In this example, they account for approximately 80% of the worst possible composite misalignment.

#### Summary

Worst possible angular misalignment	= $\alpha_1 + \alpha_2$ (figure 1) <sup>1</sup>
Maximum radial misalignment	= $R_1 + R_2$ (figure 2)
Maximum parallel misalignment $\sqrt{P_1^2 + P_2^2}$	= $P_3$ (figure 3)
Worst possible composite radial misalignment $R_C$	= $R_1 + R_2 + P_3$ (figure 4) <sup>2</sup>

Figures 1 through 4 represent that  $\alpha_1 = \alpha_2$  and  $P_1 = P_2$ , and that L is the same for LH and RH shafts.

Notes: ■ 1 indicates: These results can then be compared to the performance limit expressed in the tables for each Lovejoy coupling type.  
 ■ 2 indicates: To be compared to  $\Delta Kr$ , Max Radial Misalignment

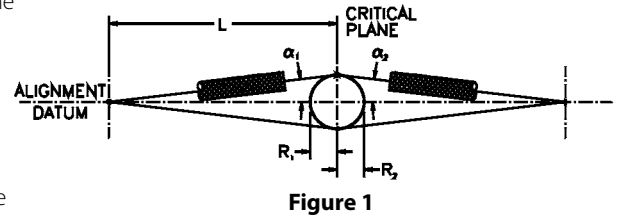


Figure 1

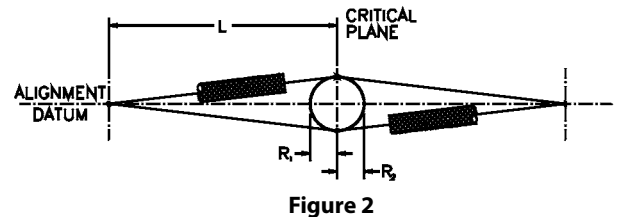


Figure 2

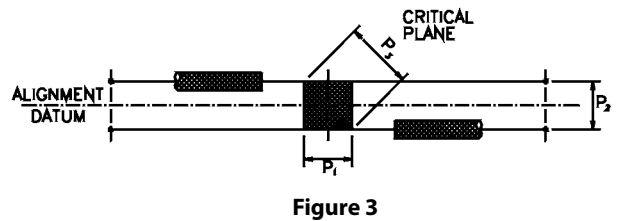


Figure 3

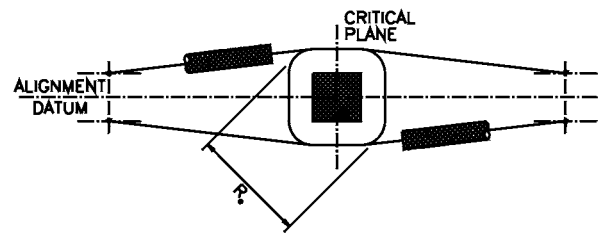


Figure 4

## HP, RPM, Kilowatts and Torque Overview

### Formulas and Equations

#### Horsepower

$$HP = \frac{\text{Force} \times \text{FPM}}{33,000} \quad HP = \frac{\text{Torque (in pound-inches)} \times \text{RPM}}{63,025}$$

$$HP = \frac{\text{Torque (in pound-feet)} \times \text{RPM}}{5,252}$$

FPM = Feet per minute

RPM = Revolutions per minute

#### Horsepower per Hundred RPM

When the HP is given and the RPM, N, is known, HP/C is:

$$HP/C = \frac{HP \times 100}{N}$$

Once HP/C is known, HP @ N RPM is found by  $HP = HP/C \times N$

#### Kilowatts

$$KW = \frac{Nm \times RPM}{9,550}$$

#### Torque

The twisting or turning effort around a shaft tending to cause rotation. Torque is determined by multiplying the applied force by the distance from the point where force is applied to the shaft center.

#### Conversions

$KW \times 1.341 = HP$

$HP \times 0.7457 = KW$

$Nm \times 0.737562 = \text{ft-lb}$

$Nm \times 8.85 = \text{in-lb}$

$\text{ft-lb} \times 1.356 = Nm$

$\text{in-lb} \times 0.113 = Nm$

$HP \times 550 = \text{ft-lb/sec}$

#### Example:

15 HP @ 1750 RPM is:

$$HP/C = \frac{15 \times 100}{1750} = .85 \text{ HP per 100 RPM (HP/C)}$$

Using .85 HP/C, the HP rating @ 800 RPM is:

$$\frac{.85}{100} \times 800 = .85 \times 8 = 6.8 \text{ HP}$$

$$TQ = F (\text{force}) \times R (\text{radius})$$

#### Inch example:

20 HP at 100 RPM = 12,605 pound-inches Torque

$$\begin{aligned} \text{Torque (in-lb)} &= \frac{63,025 \times \text{HP}}{\text{RPM}} \\ &= \text{Force} \times \text{Lever Arm (in inches)} \end{aligned}$$

$$\begin{aligned} \text{Torque (ft-lb)} &= \frac{5,252 \times \text{HP}}{\text{RPM}} \\ &= \text{Force} \times \text{Lever Arm (in feet)} \end{aligned}$$

Force = Working load in pounds

Lever Arm = Distance from the force to the center of rotation in inches or feet.

#### Metric example:

10 KW at 100 RPM = 955 Nm:

$$\text{Torque (Nm)} = \frac{KW \times 9,550}{\text{RPM}}$$

Force = Working load in Newtons

Lever Arm = Distance from the Force to the center of rotation in millimeters.

## Overhung Loads Overview

### Formulas and Equations

#### Overhung Loads

An overhung load is a bending force imposed on a shaft due to the torque transmitted by V-drives, chain drives and other power transmission devices, other than flexible couplings.

Most motor and reducer manufacturers list the maximum values allowable for overhung loads. These values should be compared with the load actually imposed by the connected drive.

Weights of the drive components are usually negligible. The formulas are based on the assumption that the load is applied at a point equal to one shaft diameter from the bearing face. Factor F, shown at right, depends on the type of drive used.

#### Inch example:

Find the overhung load imposed on a reducer by a double chain drive transmitting 7 HP @ 30 RPM. The pitch diameter of the sprocket is 10 in; service factor is 1.3.

Solution:

$$\text{O.H.L.} = \frac{(63,025) (7 \times 1.3) (1.25)}{(30) (5)} = 4,779.4 \text{ lbs}$$

#### Metric example:

Find the overhung load imposed on a reducer by a double chain drive transmitting 10 KW @ 30 RPM. The pitch diameter of the sprocket is 254 mm; service factor is 1.3.

Solution:

$$\text{O.H.L.} = \frac{(376) (10 \times 1.3) (1.25)}{(30) (1.27)} = 160 \text{ N}$$

F =	1.00 for single chain drives
	1.10 for timing belt drives
	1.25 for spur or helical gear or double chain drives
	1.50 for V-belt drives
	2.50 for flat belt drives

$$\text{O.H.L.} = \frac{63,025 \times \text{HP} \times \text{F}}{\text{N} \times \text{R}}$$

HP	=	Transmitted HP x service factor
N	=	RPM of shaft
R	=	Radius of sprocket, pulley, etc.
F	=	Factor

$$\text{O.H.L.} = \frac{376 \times \text{KW} \times \text{F}}{\text{N} \times \text{R}}$$

KW	=	Transmitted KW x service factor
N	=	RPM of shaft
R	=	Radius of sprocket, pulley, etc. (mm)
F	=	Factor

## Formulas / Equations

### Overview

## Formulas and Equations

### Horsepower / Speed / Torque Relationships

HP	Speed (RPM)	Torque
Constant ---	Increases ↑	Decreases ↓
Constant ---	Decreases ↓	Increases ↑
Increases ↑	Constant ---	Increases ↑
Decreases ↓	Constant ---	Decreases ↓
Increases ↑	Increases ↑	Constant ---
Decreases ↓	Decreases ↓	Constant ---

### Electrical Formulas

To Find	Alternating Current		To Find	Alternating or Direct Current
	Single Phase	Three Phase		
<b>Amperes when horsepower is known</b>	$\frac{HP \times 746}{E \times \text{Eff} \times \text{pf}}$	$\frac{HP \times 746}{1.73 \times E \times \text{Eff} \times \text{pf}}$	Amperes when voltage and resistance are known	$\frac{E}{R}$
<b>Amperes when kilowatts are known</b>	$\frac{KW \times 1,000}{E \times \text{pf}}$	$\frac{KW \times 1,000}{1.73 \times E \times \text{pf}}$	Voltage when resistance and current are known	$IR$
<b>Amperes when Kva are known</b>	$\frac{Kva \times 1,000}{E}$	$\frac{Kva \times 1,000}{1.73 \times E}$	Resistance when voltage and current are known	$\frac{E}{I}$
<b>Kilowatts</b>	$\frac{I \times E \times \text{pf}}{1,000}$	$\frac{1.73 \times I \times E \times \text{pf}}{1,000}$	<b>General Information (Approximation)</b> (All values at 100% load) At 1,800 RPM, a motor develops 36 in-lb per HP At 1,200 RPM, a motor develops 54 in-lb per HP At 575 volts, a three-phase motor draws 1 amp per HP At 460 volts, a three-phase motor draws 1.25 amp per HP At 230 volts, a three-phase motor draws 2.5 amp per HP At 230 volts, a single-phase motor draws 5 amp per HP At 115 volts, a single-phase motor draws 10 amp per HP	
<b>Kva</b>	$\frac{I \times E}{1,000}$	$\frac{1.73 \times I \times E}{1,000}$		
<b>Horsepower = (Output)</b>	$\frac{I \times E \times \text{Eff} \times \text{pf}}{746}$	$\frac{1.73 \times I \times E \times \text{Eff} \times \text{pf}}{746}$		
<b>I = Amperes; E = Volts; Eff = Efficiency; pf = power factor; Kva = Kilovolt amperes; KW = Kilowatts; R = Ohms</b>				
<b>Temperature conversion</b> Deg C = (Deg. F - 32) x 5/9 Deg F = (Deg. C x 9/5) + 32				

### Motor Amps @ Full Load<sup>1</sup>

HP	Alt Current		DC	HP	Alt Current		DC	HP	Alt Current		DC	HP	Alt Current		DC
	Single-Phase	Three-Phase			Single-Phase	Three-Phase			Single-Phase	Three-Phase			Single-Phase	Three-Phase	
1/2	4.9	2.0	2.7	5	28	14.4	20	25	-	60	92	75	-	180	268
1	8.0	3.4	4.8	7-1/2	40	21.0	29	30	-	75	110	100	-	240	355
1-1/2	10.0	4.8	6.6	10	50	26.0	38	40	-	100	146	125	-	300	443
2	12.0	6.2	8.5	15	-	38.0	56	50	-	120	180	150	-	360	534
3	17.0	8.6	12.5	20	-	50.0	74	60	-	150	215	200	-	480	712

Notes: ■ 1 indicates: Values are for all speeds and frequencies @ 230 volts.  
 ■ Amperage other than 230 volts can be figured:

$$V = \frac{230 \times \text{Amp from Table}}{\text{New Voltage}}$$

Example:

For 60 HP, three-phase @ 550 volts:  $\frac{(230 \times 150)}{550} = 62$  amps

Power factor estimated @ 80 percent for most motors. Efficiency is usually 80 to 90 percent.



## Sleeve and Flexible Element Chemical Resistance Chart

### Sleeve and Flexible Element Chemical Resistance Chart

Legend: A = Fluid has little or no effect; B = Fluid has minor to moderate effect; C = Fluid has severe effect; = No data available.

Resistance to:	NBR ("SOX")	Urethane	Hytre <sup>l</sup>	EPDM	Neoprene
Acetone	C	C	B	A	B
Ammonia Anhydrous	-	-	-	A	A
Ammonium Hydroxide Solutions	C	C	A	A	A (158°F)
ASTM oil No. 1	A	A	A	C	A
ASTM oil No. 3	A	B	A	C	B-C (158°F)
ASTM reference fuel A	A	A	A	C	B
ASTM reference fuel B	A	B	A	C	C
ASTM reference fuel C	B	C	B	C	C
Benzene	C	C	B	C	C
Butane	A	A	A	C	A
Carbon Tetrachloride	C	C	C	C	C
Chlorobenzene	C	C	C	C	C
Chloroform	C	C	C	C	C
Chromic Acid 10-50%	C	C	-	C	C
Dowtherm A or E solvent	-	-	-	C	C
Ethyl Alcohol	C	C	A	A	A (158°F)
Ethylene Glyco	A	B	A	A	A (158°F)
Fuel Oil	A	C	-	C	A
Gasoline	A	B	A	C	B
Glycerine	A	C	A	A	A
Hydraulic Oils (Petroleum Based)	A	A	A	C	A-B
Hydrochloric Acid, 37% (cold)	C	C	C	A	A-B
Hydrogen Peroxide, 90%	C	-	-	C	C
Isopropyl Alcohol	B	C	A	A	A-B
Kerosene	A	B	A	C	B-C
Lacquer Solvents (MEK)	C	C	C	C	C
Lubricating Oils	B	-	A	C	B
Methyl Alcohol	C	C	A	A	A
Mineral Oil	A	A	A	C	B
Naphtha	C	C	A	C	C
Nitric Acid, 10%	C	C	B	B	B
Nitrobenzene	C	C	C	C	C
Phenol	C	C	B	C	C
Phosphoric Acid, 20%	C	A	-	A	B
Phosphate Esters	-	-	A	C	C
Pickling Solution (20% Nitric Acid, 4% HP)	C	C	C	C	C
Soap Solutions	A	A	A	A	A(158°F)
Sodium Hydroxide, 20%	B	B	A	A	B
Stearic Acid	B	A	A	B	B (158°F)
Sulfuric Acid, up to 50%	C	C	A	B	A-B (158°F)
Sulfuric Acid, 50% to 80%	C	C	C	B	B-C
Tannic Acid, 10%	A	-	A	A	A-B
Toluene	C	C	A	C	C
Trichloroethylene	C	C	B	C	C
Turpentine	A	C	-	C	C
Water	A	-	B (158°F)	A (158°F)	A (212°F)
Xylene	C	C	B	C	C

## U.S. Customary Inch / Clearance-fit and Interference-fit Bore and Keyway Standards

### U.S. Customary Inch - Clearance-fit and Interference-fit Bore and Keyway Standards

Bore and Keyway dimensions comply with ANSI/AGMA 9002-B04 Standard.

Nominal Bore Diameter	Clearance Bore			Interference Bore			Keyway		"T"-DIM +0.015/-0.000
	+0.001/ -0.000	Min	Max	-0.0005/ -0.0010	Min	Max	Width +0.002/-0.000	Height (ref)	
3/8	0.3750	0.3750	0.3760	0.3750	0.3740	0.3745	0.0938	0.0469	0.421
7/16	0.4375	0.4375	0.4385	0.4375	0.4365	0.4370	0.0938	0.0469	0.484
1/2	0.5000	0.5000	0.5010	0.5000	0.4990	0.4995	0.1250	0.0625	0.560
9/16	0.5625	0.5625	0.5635	0.5625	0.5615	0.5620	0.1250	0.0625	0.623
5/8	0.6250	0.6250	0.6260	0.6250	0.6240	0.6245	0.1875	0.0938	0.709
11/16	0.6875	0.6875	0.6885	0.6875	0.6865	0.6870	0.1875	0.0938	0.773
3/4	0.7500	0.7500	0.7510	0.7500	0.7490	0.7495	0.1875	0.0938	0.837
13/16	0.8125	0.8125	0.8135	0.8125	0.8115	0.8120	0.1875	0.0938	0.900
7/8	0.8750	0.8750	0.8760	0.8750	0.8740	0.8745	0.1875	0.0938	0.964
15/16	0.9375	0.9375	0.9385	0.9375	0.9365	0.9370	0.2500	0.1250	1.051
1	1.0000	1.0000	1.0010	1.0000	0.9990	0.9995	0.2500	0.1250	1.114
1-1/16	1.0625	1.0625	1.0635	1.0625	1.0615	1.0620	0.2500	0.1250	1.178
1-1/8	1.1250	1.1250	1.1260	1.1250	1.1240	1.1245	0.2500	0.1250	1.241
1-3/16	1.1875	1.1875	1.1885	1.1875	1.1865	1.1870	0.2500	0.1250	1.304
1-1/4	1.2500	1.2500	1.2510	1.2500	1.2490	1.2495	0.2500	0.1250	1.367
1-5/16	1.3125	1.3125	1.3135	1.3125	1.3115	1.3120	0.3125	0.1562	1.455
1-3/8	1.3750	1.3750	1.3760	1.3750	1.3740	1.3745	0.3125	0.1562	1.518

Nominal Bore Diameter	Clearance Bore			Interference Bore			Keyway		"T"-DIM +0.015/-0.000
	+0.001/ -0.000	Min	Max	-0.0005/ -0.0010	Min	Max	Width +0.0025/-0.0000	Height (ref)	
1-7/16	1.4375	1.4375	1.4385	1.4375	1.4365	1.4370	0.3750	0.1875	1.605
1-1/2	1.5000	1.5000	1.5010	1.5000	1.4990	1.4995	0.3750	0.1875	1.669

Nominal Bore Diameter	Clearance Bore			Interference Bore			Keyway		"T"-DIM +0.015/-0.000
	+0.001/ -0.000	Min	Max	-0.001/ -0.002	Min	Max	Width +0.0025/-0.0000	Height (ref)	
1-9/16	1.5625	1.5625	1.5635	1.5625	1.5605	1.5615	0.3750	0.1875	1.732
1-5/8	1.6250	1.6250	1.6260	1.6250	1.6230	1.6240	0.3750	0.1875	1.796
1-11/16	1.6875	1.6875	1.6885	1.6875	1.6855	1.6865	0.3750	0.1875	1.859
1-3/4	1.7500	1.7500	1.7510	1.7500	1.7480	1.7490	0.3750	0.1875	1.922
1-13/16	1.8125	1.8125	1.8135	1.8125	1.8105	1.8115	0.5000	0.2500	2.032
1-7/8	1.8750	1.8750	1.8760	1.8750	1.8730	1.8740	0.5000	0.2500	2.096
1-15/16	1.9375	1.9375	1.9385	1.9375	1.9355	1.9365	0.5000	0.2500	2.160
2	2.0000	2.0000	2.0010	2.0000	1.9980	1.9990	0.5000	0.2500	2.223

Nominal Bore Diameter	Clearance Bore			Interference Bore			Keyway		"T"-DIM +0.015/-0.000
	+0.0015/ -0.0000	Min	Max	-0.001/ -0.002	Min	Max	Width +0.0025/-0.0000	Height (ref)	
2-1/16	2.0625	2.0625	2.0640	2.0625	2.0605	2.0615	0.5000	0.2500	2.287
2-1/8	2.1250	2.1250	2.1265	2.1250	2.1230	2.1240	0.5000	0.2500	2.350
2-3/16	2.1875	2.1875	2.1890	2.1875	2.1855	2.1865	0.5000	0.2500	2.414
2-1/4	2.2500	2.2500	2.2515	2.2500	2.2480	2.2490	0.5000	0.2500	2.477

Note: ■ Class 1 clearance fits assumed.

## U.S. Customary Inch / Clearance-fit and Interference-fit Bore and Keyway Standards

### U.S. Customary Inch - Clearance-fit and Interference-fit Bore and Keyway Standards

Bore and Keyway dimensions comply with ANSI/AGMA 9002-B04 Standard.

Nominal Bore Diameter	Clearance Bore			Interference Bore			Keyway		"T"-DIM +0.015/-0.000
	+0.0015/ -0.0000	Min	Max	-0.001/ -0.002	Min	Max	Width +0.003/-0.000	Height (ref)	
2-5/16	2.3125	2.3125	2.3140	2.3125	2.3105	2.3115	0.6250	0.3125	2.587
2-3/8	2.3750	2.3750	2.3765	2.3750	2.3730	2.3740	0.6250	0.3125	2.651
2-7/16	2.4375	2.4375	2.4390	2.4375	2.4355	2.4365	0.6250	0.3125	2.714
2-1/2	2.5000	2.5000	2.5015	2.5000	2.4980	2.4990	0.6250	0.3125	2.778
2-9/16	2.5625	2.5625	2.5640	2.5625	2.5605	2.5615	0.6250	0.3125	2.841
2-5/8	2.6250	2.6250	2.6265	2.6250	2.6230	2.6240	0.6250	0.3125	2.905
2-11/16	2.6875	2.6875	2.6890	2.6875	2.6855	2.6865	0.6250	0.3125	2.968
2-3/4	2.7500	2.7500	2.7515	2.7500	2.7480	2.7490	0.6250	0.3125	3.032
2-13/16	2.8125	2.8125	2.8140	2.8125	2.8105	2.8115	0.7500	0.3750	3.142
2-7/8	2.8750	2.8750	2.8765	2.8750	2.8730	2.8740	0.7500	0.3750	3.205
2-15/16	2.9375	2.9375	2.9390	2.9375	2.9355	2.9365	0.7500	0.3750	3.269
3	3.0000	3.0000	3.0015	3.0000	2.9980	2.9990	0.7500	0.3750	3.332

Nominal Bore Diameter	Clearance Bore			Interference Bore			Keyway		"T"-DIM +0.015/-0.000
	+0.0015/ -0.0000	Min	Max	-0.0015/ -0.0030	Min	Max	Width +0.003/-0.000	Height (ref)	
3-1/16	3.0625	3.0625	3.0640	3.0625	3.0595	3.0610	0.7500	0.3750	3.396
3-1/8	3.1250	3.1250	3.1265	3.1250	3.1220	3.1235	0.7500	0.3750	3.459
3-3/16	3.1875	3.1875	3.1890	3.1875	3.1845	3.1860	0.7500	0.3750	3.523
3-1/4	3.2500	3.2500	3.2515	3.2500	3.2470	3.2485	0.7500	0.3750	3.586
3-5/16	3.3125	3.3125	3.3140	3.3125	3.3095	3.3110	0.8750	0.4375	3.696
3-3/8	3.3750	3.3750	3.3765	3.3750	3.3720	3.3735	0.8750	0.4375	3.760
3-7/16	3.4375	3.4375	3.4390	3.4375	3.4345	3.4360	0.8750	0.4375	3.823
3-1/2	3.5000	3.5000	3.5015	3.5000	3.4970	3.4985	0.8750	0.4375	3.887
3-9/16	3.5625	3.5625	3.5640	3.5625	3.5595	3.5610	0.8750	0.4375	3.950
3-5/8	3.6250	3.6250	3.6265	3.6250	3.6220	3.6235	0.8750	0.4375	4.014
3-11/16	3.6875	3.6875	3.6890	3.6875	3.6845	3.6860	0.8750	0.4375	4.077
3-3/4	3.7500	3.7500	3.7515	3.7500	3.7470	3.7485	0.8750	0.4375	4.141
3-13/16	3.8125	3.8125	3.8140	3.8125	3.8095	3.8110	1.0000	0.5000	4.251
3-7/8	3.8750	3.8750	3.8765	3.8750	3.8720	3.8735	1.0000	0.5000	4.314
3-15/16	3.9375	3.9375	3.9390	3.9375	3.9345	3.9360	1.0000	0.5000	4.378
4	4.0000	4.0000	4.0015	4.0000	3.9970	3.9985	1.0000	0.5000	4.441

Nominal Bore Diameter	Clearance Bore			Interference Bore			Keyway		"T"-DIM +0.015/-0.000
	+0.0015/ -0.0000	Min	Max	-0.0020/ -0.0035	Min	Max	Width +0.003/-0.000	Height (ref)	
4-1/16	4.0625	4.0625	4.0640	4.0625	4.0590	4.0605	1.0000	0.5000	4.505
4-1/8	4.1250	4.1250	4.1265	4.1250	4.1215	4.1230	1.0000	0.5000	4.568
4-3/16	4.1875	4.1875	4.1890	4.1875	4.1840	4.1855	1.0000	0.5000	4.632
4-1/4	4.2500	4.2500	4.2515	4.2500	4.2465	4.2480	1.0000	0.5000	4.695
4-5/16	4.3125	4.3125	4.3140	4.3125	4.3090	4.3105	1.0000	0.5000	4.759
4-3/8	4.3750	4.3750	4.3765	4.3750	4.3715	4.3730	1.0000	0.5000	4.822
4-7/16	4.4375	4.4375	4.4390	4.4375	4.4340	4.4355	1.0000	0.5000	4.885
4-1/2	4.5000	4.5000	4.5015	4.5000	4.4965	4.4980	1.0000	0.5000	4.949

Note: ■ Class 1 clearance fits assumed.

## U.S. Customary Inch / Clearance-fit and Interference-fit Bore and Keyway Standards

### U.S. Customary Inch - Clearance-fit and Interference-fit Bore and Keyway Standards

Bore and Keyway dimensions comply with ANSI/AGMA 9002-B04 Standard.

Nominal Bore Diameter	Clearance Bore			Interference Bore			Keyway		"T"-DIM +0.015/-0.000
	+0.0015/ -0.0000	Min	Max	-0.0020/ -0.0035	Min	Max	Width +0.0035/-0.0000	Height (ref)	
4-9/16	4.5625	4.5625	4.5640	4.5625	4.5590	4.5605	1.2500	0.6250	5.105
4-5/8	4.6250	4.6250	4.6265	4.6250	4.6215	4.6230	1.2500	0.6250	5.169
4-11/16	4.6875	4.6875	4.6890	4.6875	4.6840	4.6855	1.2500	0.6250	5.233
4-3/4	4.7500	4.7500	4.7515	4.7500	4.7465	4.7480	1.2500	0.6250	5.296
4-13/16	4.8125	4.8125	4.8140	4.8125	4.8090	4.8105	1.2500	0.6250	5.360
4-7/8	4.8750	4.8750	4.8765	4.8750	4.8715	4.8730	1.2500	0.6250	5.424
4-15/16	4.9375	4.9375	4.9390	4.9375	4.9340	4.9355	1.2500	0.6250	5.487
5	5.0000	5.0000	5.0015	5.0000	4.9965	4.9980	1.2500	0.6250	5.551

Nominal Bore Diameter	Clearance Bore			Interference Bore			Keyway		"T"-DIM +0.015/-0.000
	+0.0015/ -0.0000	Min	Max	-0.0025/ -0.0040	Min	Max	Width +0.0035/-0.0000	Height (ref)	
5-1/16	5.0625	5.0625	5.0640	5.0625	5.0585	5.0600	1.2500	0.6250	5.614
5-1/8	5.1250	5.1250	5.1265	5.1250	5.1210	5.1225	1.2500	0.6250	5.678
5-3/16	5.1875	5.1875	5.1890	5.1875	5.1835	5.1850	1.2500	0.6250	5.741
5-1/4	5.2500	5.2500	5.2515	5.2500	5.2460	5.2475	1.2500	0.6250	5.805
5-5/16	5.3125	5.3125	5.3140	5.3125	5.3085	5.3100	1.2500	0.6250	5.868
5-3/8	5.3750	5.3750	5.3765	5.3750	5.3710	5.3725	1.2500	0.6250	5.931
5-7/16	5.4375	5.4375	5.4390	5.4375	5.4335	5.4350	1.2500	0.6250	5.995
5-1/2	5.5000	5.5000	5.5015	5.5000	5.4960	5.4975	1.2500	0.6250	6.058
5-9/16	5.5625	5.5625	5.5640	5.5625	5.5585	5.5600	1.5000	0.7500	6.214
5-5/8	5.6250	5.6250	5.6265	5.6250	5.6210	5.6225	1.5000	0.7500	6.278
5-11/16	5.6875	5.6875	5.6890	5.6875	5.6835	5.6850	1.5000	0.7500	6.342
5-3/4	5.7500	5.7500	5.7515	5.7500	5.7460	5.7475	1.5000	0.7500	6.405
5-13/16	5.8125	5.8125	5.8140	5.8125	5.8085	5.8100	1.5000	0.7500	6.469
5-7/8	5.8750	5.8750	5.8765	5.8750	5.8710	5.8725	1.5000	0.7500	6.533
5-15/16	5.9375	5.9375	5.9390	5.9375	5.9335	5.9350	1.5000	0.7500	6.596
6	6.0000	6.0000	6.0015	6.0000	5.9960	5.9975	1.5000	0.7500	6.660
6-1/16	6.0625	6.0625	6.0640	6.0625	6.0585	6.0600	1.5000	0.7500	6.723
6-1/8	6.1250	6.1250	6.1265	6.1250	6.1210	6.1225	1.5000	0.7500	6.787
6-3/16	6.1875	6.1875	6.1890	6.1875	6.1835	6.1850	1.5000	0.7500	6.850
6-1/4	6.2500	6.2500	6.2515	6.2500	6.2460	6.2475	1.5000	0.7500	6.914
6-5/16	6.3125	6.3125	6.3140	6.3125	6.3085	6.3100	1.5000	0.7500	6.977
6-3/8	6.3750	6.3750	6.3765	6.3750	6.3710	6.3725	1.5000	0.7500	7.041
6-7/16	6.4375	6.4375	6.4390	6.4375	6.4335	6.4350	1.5000	0.7500	7.104
6-1/2*	6.5000	6.5000	6.5015	6.5000	6.4960	6.4975	1.5000	0.7500	7.167

Nominal Bore Diameter	Clearance Bore			Interference Bore			Keyway		"T"-DIM +0.015/-0.000
	No Standard Tolerance*			-0.0020/ -0.0040	Min	Max	Width +0.004/-0.000	Height (ref)	
6-9/16				6.5625	6.5585	6.5600	1.7500	0.7500	7.199
6-5/8				6.6250	6.6210	6.6225	1.7500	0.7500	7.262
6-11/16				6.6875	6.6835	6.6850	1.7500	0.7500	7.326
6-3/4				6.7500	6.7460	6.7475	1.7500	0.7500	7.390
6-13/16				6.8125	6.8085	6.8100	1.7500	0.7500	7.453
6-7/8				6.8750	6.8710	6.8725	1.7500	0.7500	7.517
6-15/16				6.9375	6.9335	6.9350	1.7500	0.7500	7.580
7				7.0000	6.9960	6.9975	1.7500	0.7500	7.644

Notes: ■ Class 1 clearance fits assumed; no standards for clearance fit above 6-1/2 inches.  
 ■ \* indicates: For clearance fit bores larger than 6-1/2" please consult with Lovejoy Engineering.

## U.S. Customary Inch / Clearance-fit and Interference-fit Bore and Keyway Standards

### U.S. Customary Inch - Clearance-fit and Interference-fit Bore and Keyway Standards

Bore and Keyway dimensions comply with ANSI/AGMA 9002-B04 Standard.

Nominal Bore Diameter	Interference Bore			Keyway		"T"-DIM +0.015/-0.000
	-0.003/ -0.005	Min	Max	Width +0.004/-0.000	Height (ref)	
7-1/8	7.1250	7.1200	7.1220	1.7500	0.7500	7.771
7-1/4	7.2500	7.2450	7.2470	1.7500	0.7500	7.898
7-3/8	7.3750	7.3700	7.3720	1.7500	0.7500	8.025
7-1/2	7.5000	7.4950	7.4970	1.7500	0.7500	8.151
7-5/8	7.6250	7.6200	7.6220	2.0000	0.7500	8.247
7-3/4	7.7500	7.7450	7.7470	2.0000	0.7500	8.374
7-7/8	7.8750	7.8700	7.8720	2.0000	0.7500	8.501
8	8.0000	7.9950	7.9970	2.0000	0.7500	8.628

Nominal Bore Diameter	Interference Bore			Keyway		"T"-DIM +0.015/-0.000
	-0.0035/ -0.0055	Min	Max	Width +0.004/-0.000	Height (ref)	
8-1/8	8.1250	8.1195	8.1215	2.0000	0.7500	8.755
8-1/4	8.2500	8.2445	8.2465	2.0000	0.7500	8.882
8-3/8	8.3750	8.3695	8.3715	2.0000	0.7500	9.009
8-1/2	8.5000	8.4945	8.4965	2.0000	0.7500	9.136
8-5/8	8.6250	8.6195	8.6215	2.0000	0.7500	9.262
8-3/4	8.7500	8.7445	8.7465	2.0000	0.7500	9.389
8-7/8	8.8750	8.8695	8.8715	2.0000	0.7500	9.516
9	9.0000	8.9945	8.9965	2.0000	0.7500	9.642

Nominal Bore Diameter	Interference Bore			Keyway		"T"-DIM +0.015/-0.000
	-0.004/ -0.006	Min	Max	Width +0.004/-0.000	Height (ref)	
9-1/8	9.1250	9.1190	9.1210	2.5000	0.8750	9.830
9-1/4	9.2500	9.2440	9.2460	2.5000	0.8750	9.958
9-3/8	9.3750	9.3690	9.3710	2.5000	0.8750	10.085
9-1/2	9.5000	9.4940	9.4960	2.5000	0.8750	10.213
9-5/8	9.6250	9.6190	9.6210	2.5000	0.8750	10.340
9-3/4	9.7500	9.7440	9.7460	2.5000	0.8750	10.467
9-7/8	9.8750	9.8690	9.8710	2.5000	0.8750	10.594
10	10.0000	9.9940	9.9960	2.5000	0.8750	10.721

Nominal Bore Diameter	Interference Bore			Keyway		"T"-DIM +0.015/-0.000
	-0.0045/ -0.0065	Min	Max	Width +0.004/-0.000	Height (ref)	
10-1/8	10.1250	10.1185	10.1205	2.5000	0.8750	10.848
10-1/4	10.2500	10.2435	10.2455	2.5000	0.8750	10.975
10-3/8	10.3750	10.3685	10.3705	2.5000	0.8750	11.102
10-1/2	10.5000	10.4935	10.4955	2.5000	0.8750	11.229
10-5/8	10.6250	10.6185	10.6205	2.5000	0.8750	11.356
10-3/4	10.7500	10.7435	10.7455	2.5000	0.8750	11.483
10-7/8	10.8750	10.8685	10.8705	2.5000	0.8750	11.609
11	11.0000	10.9935	10.9955	2.5000	0.8750	11.736

Note: ■ No standard for clearance fit above 6-1/2 inches; please contact Lovejoy Technical Support.

## U.S. Customary Inch / Clearance-fit and Interference-fit Bore and Keyway Standards

### U.S. Customary Inch - Clearance-fit and Interference-fit Bore and Keyway Standards

Bore and Keyway dimensions comply with ANSI/AGMA 9002-B04 Standard.

Nominal Bore Diameter	Interference Bore			Keyway		"T"-DIM +0.015/-0.000
	-0.005/ -0.007	Min	Max	Width +0.004/-0.000	Height (ref)	
11-1/4	11.2500	11.2430	11.2450	3.0000	1.0000	12.051
11-1/2	11.5000	11.4930	11.4950	3.0000	1.0000	12.306
11-3/4	11.7500	11.7430	11.7450	3.0000	1.0000	12.560
12	12.0000	11.9930	11.9950	3.0000	1.0000	12.814

Nominal Bore Diameter	Interference Bore			Keyway		"T"-DIM +0.015/-0.000
	-0.0055/ -0.0075	Min	Max	Width +0.004/-0.000	Height (ref)	
12-1/4	12.2500	12.2425	12.2445	3.0000	1.0000	13.068
12-1/2	12.5000	12.4925	12.4945	3.0000	1.0000	13.322
12-3/4	12.7500	12.7425	12.7445	3.0000	1.0000	13.576
13	13.0000	12.9925	12.9945	3.0000	1.0000	13.830

Nominal Bore Diameter	Interference Bore			Keyway		"T"-DIM +0.015/-0.000
	-0.0065/ -0.0085	Min	Max	Width +0.004/-0.000	Height (ref)	
13-1/4	13.2500	13.2415	13.2435	3.5000	1.2500	14.270
13-1/2	13.5000	13.4915	13.4935	3.5000	1.2500	14.524
13-3/4	13.7500	13.7415	13.7435	3.5000	1.2500	14.779
14	14.0000	13.9915	13.9935	3.5000	1.2500	15.033

Nominal Bore Diameter	Interference Bore			Keyway		"T"-DIM +0.015/-0.000
	-0.007/ -0.009	Min	Max	Width +0.004/-0.000	Height (ref)	
14-1/4	14.2500	14.2410	14.2430	3.5000	1.2500	15.287
14-1/2	14.5000	14.4910	14.4930	3.5000	1.2500	15.541
14-3/4	14.7500	14.7410	14.7430	3.5000	1.2500	15.794
15	15.0000	14.9910	14.9930	3.5000	1.2500	16.048

Nominal Bore Diameter	Interference Bore			Keyway		"T"-DIM +0.015/-0.000
	-0.0075/ -0.0100	Min	Max	Width +0.004/-0.000	Height (ref)	
15-1/4	15.2500	15.2400	15.2425	4.0000	1.5000	16.488
15-1/2	15.5000	15.4900	15.4925	4.0000	1.5000	16.742
15-3/4	15.7500	15.7400	15.7425	4.0000	1.5000	16.997
16	16.0000	15.9900	15.9925	4.0000	1.5000	17.251

Nominal Bore Diameter	Interference Bore			Keyway		"T"-DIM +0.015/-0.000
	-0.0080/ -0.0105	Min	Max	Width +0.004/-0.000	Height (ref)	
16-1/4	16.2500	16.2395	16.2420	4.0000	1.5000	17.505
16-1/2	16.5000	16.4895	16.4920	4.0000	1.5000	17.759
16-3/4	16.7500	16.7395	16.7420	4.0000	1.5000	18.013
17	17.0000	16.9895	16.9920	4.0000	1.5000	18.266

Nominal Bore Diameter	Interference Bore			Keyway		"T"-DIM +0.015/-0.000
	-0.0085/ -0.0110	Min	Max	Width +0.004/-0.000	Height (ref)	
17-1/4	17.2500	17.2390	17.2415	4.0000	1.5000	18.520
17-1/2	17.5000	17.4890	17.4915	4.0000	1.5000	18.773
17-3/4	17.7500	17.7390	17.7415	4.0000	1.5000	19.027
18	18.0000	17.9890	17.9915	4.0000	1.5000	19.280

Note: ■ No standard for clearance fit above 6-1/2 inches; please contact Lovejoy Technical Support.

## Inch / Metric One Key Recommended Keys

### Recommended Keys for Bores with One Key - Inch Series

Per ANSI/AGMA 9002-B04 Standard.

Shaft Diameter		Key	Key	Key	Key
Over	To (incl)	Square	Square	Rectangular	Rectangular
0.313	0.438	.0937 x .0937	3/32 x 3/32	—	—
0.438	0.562	.1250 x .1250	1/8 x 1/8	.125 x .0937	1/8 x 3/32
0.562	0.875	.1875 x .1875	3/16 x 3/16	.1875 x .125	3/16 x 1/8
0.875	1.250	.2500 x .2500	1/4 x 1/4	.250 x .1875	1/4 x 3/16
1.250	1.375	.3125 x .3125	5/16 x 5/16	.3125 x .2500	5/16 x 1/4
1.375	1.750	.3750 x .3750	3/8 x 3/8	.3750 x .2500	3/8 x 1/4
1.750	2.250	.5000 x .5000	1/2 x 1/2	.5000 x .3750	1/2 x 3/8
2.250	2.750	.6250 x .6250	5/8 x 5/8	.6250 x .4375	5/8 x 7/16
2.750	3.250	.7500 x .7500	3/4 x 3/4	.7500 x .5000	3/4 x 1/2
3.250	3.750	.8750 x .8750	7/8 x 7/8	.8750 x .6250	7/8 x 5/5
3.750	4.500	1.0000 x 1.0000	1 x 1	1.0000 x .7500	1 x 3/4
4.500	5.500	1.2500 x 1.2500	1-1/4 x 1-1/4	1.2500 x .8750	1-1/4 x 7/8
5.500	6.500	1.5000 x 1.5000	1-1/2 x 1-1/2	1.5000 x 1.0000	1-1/2 x 1
6.500	7.500	1.7500 x 1.7500	1-3/4 x 1-3/4	1.7500 x 1.5000	1-3/4 x 1-1/2
7.500	9.000	2.0000 x 2.0000	2 x 2	2.0000 x 1.5000	2 x 1-1/2
9.000	11.000	2.5000 x 2.5000	2-1/2 x 2-1/2	2.5000 x 1.7500	2-1/2 x 1-3/4
11.000	13.000	3.0000 x 3.0000	3 x 3	3.0000 x 2.0000	3 x 2
13.000	15.000	3.5000 x 3.5000	3-1/2 x 3-1/2	3.5000 x 2.5000	3-1/2 x 2-1/2
15.000	18.000	—	—	4.0000 x 3.0000	4 x 3

Note: ■ Rectangular keys preferred for bore sizes above 6½ inches.

### Recommended Keys for Bores with One Key - Metric Series (mm)

Per ANSI/AGMA 9112-A04 and ISO R773 Standards.

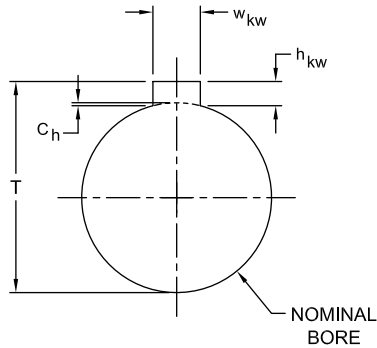
Shaft Diameter		Key
Over	To (incl)	Width x Height
6	8	2 x 2
8	10	3 x 3
10	12	4 x 4
12	17	5 x 5
17	22	6 x 6
22	30	8 x 7
30	38	10 x 8
38	44	12 x 8
44	50	14 x 9
50	58	16 x 10
58	65	18 x 11
65	75	20 x 12
75	85	22 x 14

Shaft Diameter		Key
Over	To (incl)	Width x Height
85	95	25 x 14
95	110	28 x 16
110	130	32 x 18
130	150	36 x 20
150	170	40 x 22
170	200	45 x 25
200	230	50 x 28
230	260	56 x 32
260	290	63 x 32
290	330	70 x 36
330	380	80 x 40
380	440	90 x 45
440	500	100 x 50

## Inch / Metric Keys, Metric Shaft Bores

**Inch Series:** hub keyway depth is one-half the nominal height of the key and measured from the side corner. The dimension from the top of the keyway to the opposite bore side, "T-dim", is calculated from (refer to ANSI/AGMA 9002-B04) the following:

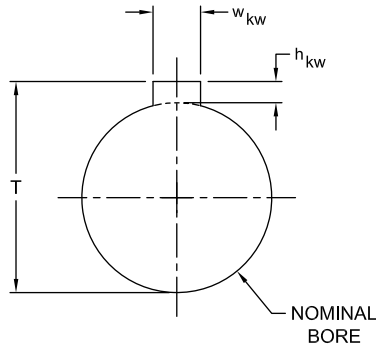
$$T = \text{bore} + (h_{kw} - C_h)$$



**Inch Series**

**Metric Series:** hub keyway depth is not one-half of the nominal height of the key. Keyway depth is calculated to the top of the bore and cannot be determined by direct measurement. The "T-dim" from the top of the keyway to the opposite bore side is calculated from (refer to ANSI/AGMA 9112-A04) the following:

$$T = \text{bore} + h_{kw}$$



**Metric Series**

### Recommended Bores for Metric Shafts (mm)

Per ANSI/AGMA 9112-A04; ISO/R775:1969 Standards

Nominal Shaft Diameter			Bore Diameter Tolerance		
Over	To (incl)	Tolerance	Clearance	Transitional	Interference
incl 12	18	j6	F7	H7	M6
18	30	j6	F7	H7	M6
30	50	k6	F7	H7	K6
50	80	m6	F7	H7	K7
80	100	m6	F7	H7	M7
100	120	m6	F7	H7	P7
120	180	m6	F7	H7	P7
180	200	m6	F7	H7	P7
200	225	m6	F7	H7	R7
225	250	m6	F7	H7	R7
250	280	m6	F7	H7	R7
280	315	m6	F7	H7	R7
315	355	m6	F7	H7	R7
355	400	m6	F7	H7	R8
400	450	m6	F7	H7	R8
450	500	m6	F7	H7	R8

Note: ■ For other shaft sizes, consult with Lovejoy Engineering.



## Lovejoy, Inc. Customary Metric / Clearance-fit and Interference-fit Bore and Keyway Standards

### Customary Metric Clearance-fit and Interference-fit Bore and Keyway Standards (millimeters)

#### Keyway Tolerances per ISO 286-2

Unless otherwise stated, Lovejoy, Inc. assumes H7 tolerances as standard clearance and P7 tolerances as standard interference fits if shaft and/or bore tolerances are not specified. H7 may be transitional or clearance based on your shaft actual size.

Nominal Bore Diameter	Clearance Bore		Interference Bore		Keyway			"T"-DIM +0.1/-0.0	
	H7 Bore (+0.000/+0.015)		P7 Bore (-0.009/-0.024)		Width (Js9)		Height Nominal		
	Min	Max	Min	Max	+/- 0.0125	Min			Max
8	8.000	8.015	7.976	7.991	2	1.988	2.013	1	9.00
9	9.000	9.015	8.976	8.991	3	2.988	3.013	1.4	10.40
10	10.000	10.015	9.976	9.991	3	2.988	3.013	1.4	11.40

Nominal Bore Diameter	Clearance Bore		Interference Bore		Keyway			"T"-DIM +0.1/-0.0	
	H7 Bore (+0.000/+0.018)		P7 Bore (-0.011/-0.029)		Width (Js9)		Height Nominal		
	Min	Max	Min	Max	+/- 0.0150	Min			Max
11	11.000	11.018	10.971	10.989	4	3.985	4.015	1.8	12.80
12	12.000	12.018	11.971	11.989	4	3.985	4.015	1.8	13.80
13	13.000	13.018	12.971	12.989	5	4.985	5.015	2.3	15.30
14	14.000	14.018	13.971	13.989	5	4.985	5.015	2.3	16.30
15	15.000	15.018	14.971	14.989	5	4.985	5.015	2.3	17.30
16	16.000	16.018	15.971	15.989	5	4.985	5.015	2.3	18.30
17	17.000	17.018	16.971	16.989	5	4.985	5.015	2.3	19.30
18	18.000	18.018	17.971	17.989	6	5.985	6.015	2.8	20.80

Nominal Bore Diameter	Clearance Bore		Interference Bore		Keyway			"T"-DIM +0.1/-0.0	
	H7 Bore (+0.000/+0.021)		P7 Bore (-0.014/-0.035)		Width (Js9)		Height Nominal		
	Min	Max	Min	Max	+/- 0.0150	Min			Max
19	19.000	19.021	18.965	18.986	6	5.985	6.015	2.8	21.80
20	20.000	20.021	19.965	19.986	6	5.985	6.015	2.8	22.80
21	21.000	21.021	20.965	20.986	6	5.985	6.015	2.8	23.80
22	22.000	22.021	21.965	21.986	6	5.985	6.015	2.8	24.80

Nominal Bore Diameter	Clearance Bore		Interference Bore		Keyway			"T"-DIM +0.20/-0.00	
	H7 Bore (+0.000/+0.021)		P7 Bore (-0.014/-0.035)		Width (Js9)		Height Nominal		
	Min	Max	Min	Max	+/- 0.0180	Min			Max
23	23.000	23.021	22.965	22.986	8	7.982	8.018	3.3	26.30
24	24.000	24.021	23.965	23.986	8	7.982	8.018	3.3	27.30
25	25.000	25.021	24.965	24.986	8	7.982	8.018	3.3	28.30
26	26.000	26.021	25.965	25.986	8	7.982	8.018	3.3	29.30
27	27.000	27.021	26.965	26.986	8	7.982	8.018	3.3	30.30
28	28.000	28.021	27.965	27.986	8	7.982	8.018	3.3	31.30
29	29.000	29.021	28.965	28.986	8	7.982	8.018	3.3	32.30
30	30.000	30.021	29.965	29.986	8	7.982	8.018	3.3	33.30

Nominal Bore Diameter	Clearance Bore		Interference Bore		Keyway			"T"-DIM +0.20/-0.00	
	H7 Bore (+0.000/+0.025)		P7 Bore (-0.017/-0.042)		Width (Js9)		Height Nominal		
	Min	Max	Min	Max	+/- 0.0180	Min			Max
32	32.000	32.025	31.958	31.983	10	9.982	10.018	3.3	35.30
35	35.000	35.025	34.958	34.983	10	9.982	10.018	3.3	38.30
38	38.000	38.025	37.958	37.983	10	9.982	10.018	3.3	41.30

Nominal Bore Diameter	Clearance Bore		Interference Bore		Keyway			"T"-DIM +0.20/-0.00	
	H7 Bore (+0.000/+0.025)		P7 Bore (-0.017/-0.042)		Width (Js9)		Height Nominal		
	Min	Max	Min	Max	+/- 0.0215	Min			Max
40	40.000	40.025	39.958	39.983	12	11.979	12.022	3.3	43.30
42	42.000	42.025	41.958	41.983	12	11.979	12.022	3.3	45.30
45	45.000	45.025	44.958	44.983	14	13.979	14.022	3.8	48.80
48	48.000	48.025	47.958	47.983	14	13.979	14.022	3.8	51.80
50	50.000	50.025	49.958	49.983	14	13.979	14.022	3.8	53.80

## Lovejoy, Inc. Customary Metric / Clearance-fit and Interference-fit Bore and Keyway Standards

### Customary Metric Clearance-fit and Interference-fit Bore and Keyway Standards (millimeters)

#### Keyway Tolerances per ISO 286-2

Unless otherwise stated, Lovejoy, Inc. assumes H7 tolerances as standard clearance and P7 tolerances as standard interference fits if shaft and/or bore tolerances are not specified. H7 may be transitional or clearance based on your shaft actual size.

Nominal Bore Diameter	Clearance Bore		Interference Bore		Keyway			"T"-DIM +0.25/-0.00	
	H7 Bore (+0.000/+0.030)		P7 Bore (-0.021/-0.051)		Width (Js9)		Height Nominal		
	Min	Max	Min	Max	+/- 0.0215	Min			Max
55	55.000	55.030	54.949	54.979	16	15.979	16.022	4.3	59.30
56	56.000	56.030	55.949	55.979	16	15.979	16.022	4.3	60.30
60	60.000	60.030	59.949	59.979	18	17.979	18.022	4.4	64.40
63	63.000	63.030	62.949	62.979	18	17.979	18.022	4.4	67.40
65	65.000	65.030	64.949	64.979	18	17.979	18.022	4.4	69.40

Nominal Bore Diameter	Clearance Bore		Interference Bore		Keyway			"T"-DIM +0.25/-0.00	
	H7 Bore (+0.000/+0.030)		P7 Bore (-0.021/-0.051)		Width (Js9)		Height Nominal		
	Min	Max	Min	Max	+/- 0.0260	Min			Max
70	70.000	70.030	69.949	69.979	20	19.974	20.026	4.9	74.90
71	71.000	71.030	70.949	70.979	20	19.974	20.026	4.9	75.90
75	75.000	75.030	74.949	74.979	20	19.974	20.026	4.9	79.90
80	80.000	80.030	79.949	79.979	22	21.974	22.026	5.4	85.40

Nominal Bore Diameter	Clearance Bore		Interference Bore		Keyway			"T"-DIM +0.25/-0.00	
	H7 Bore (+0.000/+0.035)		P7 Bore (-0.024/-0.059)		Width (Js9)		Height Nominal		
	Min	Max	Min	Max	+/- 0.0260	Min			Max
85	85.000	85.035	84.941	84.976	22	21.974	22.026	5.4	90.40
90	90.000	90.035	89.941	89.976	25	24.974	25.026	5.4	95.40
95	95.000	95.035	94.941	94.976	25	24.974	25.026	5.4	100.40
100	100.000	100.035	99.941	99.976	28	27.974	28.026	6.4	106.40
110	110.000	110.035	109.941	109.976	28	27.974	28.026	6.4	116.40

Nominal Bore Diameter	Clearance Bore		Interference Bore		Keyway			"T"-DIM +0.25/-0.00	
	H7 Bore (+0.000/+0.035)		P7 Bore (-0.024/-0.059)		Width (Js9)		Height Nominal		
	Min	Max	Min	Max	+/- 0.0310	Min			Max
115	115.000	115.035	114.941	114.976	32	31.969	32.031	7.4	122.40
120	120.000	120.035	119.941	119.976	32	31.969	32.031	7.4	127.40

Nominal Bore Diameter	Clearance Bore		Interference Bore		Keyway			"T"-DIM +0.25/-0.00	
	H7 Bore (+0.000/+0.040)		P7 Bore (-0.028/-0.068)		Width (Js9)		Height Nominal		
	Min	Max	Min	Max	+/- 0.0310	Min			Max
125	125.000	125.040	124.932	124.972	32	31.969	32.031	7.4	132.40
130	130.000	130.040	129.932	129.972	32	31.969	32.031	7.4	137.40

Nominal Bore Diameter	Clearance Bore		Interference Bore		Keyway			"T"-DIM +0.30/-0.00	
	H7 Bore (+0.000/+0.040)		P7 Bore (-0.028/-0.068)		Width (Js9)		Height Nominal		
	Min	Max	Min	Max	+/- 0.0310	Min			Max
140	140.000	140.040	139.932	139.972	36	35.969	36.031	8.4	148.40
150	150.000	150.040	149.932	149.972	36	35.969	36.031	8.4	158.40
160	160.000	160.040	159.932	159.972	40	39.969	40.031	9.4	169.40
170	170.000	170.040	169.932	169.972	40	39.969	40.031	9.4	179.40
180	180.000	180.040	179.932	179.972	45	44.969	45.031	10.4	190.40

Nominal Bore Diameter	Clearance Bore		Interference Bore		Keyway			"T"-DIM +0.30/-0.00	
	H7 Bore (+0.000/+0.046)		P7 Bore (-0.033/-0.079)		Width (Js9)		Height Nominal		
	Min	Max	Min	Max	+/- 0.0310	Min			Max
190	190.000	190.046	189.921	189.967	45	44.969	45.031	10.4	200.40
200	200.000	200.046	199.921	199.967	45	44.969	45.031	10.4	210.40
210	210.000	210.046	209.921	209.967	50	49.969	50.031	11.4	221.40
220	220.000	220.046	219.921	219.967	50	49.969	50.031	11.4	231.40
225	225.000	225.046	224.921	224.967	50	49.969	50.031	11.4	236.40
230	230.000	230.046	229.921	229.967	50	49.969	50.031	11.4	241.40

## Lovejoy, Inc. Customary Metric / Clearance-fit and Interference-fit Bore and Keyway Standards

### Customary Metric Clearance-fit and Interference-fit Bore and Keyway Standards (millimeters)

#### Keyway Tolerances per ISO 286-2

Unless otherwise stated, Lovejoy, Inc. assumes H7 tolerances as standard clearance and P7 tolerances as standard interference fits if shaft and/or bore tolerances are not specified. H7 may be transitional or clearance based on your shaft actual size.

Nominal Bore Diameter	Clearance Bore		Interference Bore		Keyway			"T"-DIM +0.30/-0.00	
	H7 Bore (+0.000/+0.046)		P7 Bore (-0.033/-0.079)		Width (Js9)				
	Min	Max	Min	Max	+/- 0.0370	Min	Max		
240	240.000	240.046	239.921	239.967	56	55.963	56.037	12.4	252.40
250	250.000	250.046	249.921	249.967	56	55.963	56.037	12.4	262.40

Nominal Bore Diameter	Clearance Bore		Interference Bore		Keyway			"T"-DIM +0.30/-0.00	
	H7 Bore (+0.000/+0.052)		P7 Bore (-0.036/-0.088)		Width (Js9)				
	Min	Max	Min	Max	+/- 0.0370	Min	Max		
260	260.000	260.052	259.912	259.964	56	55.963	56.037	12.4	272.40
270	270.000	270.052	269.912	269.964	63	62.963	63.037	12.4	282.40
280	280.000	280.052	279.912	279.964	63	62.963	63.037	12.4	292.40
290	290.000	290.052	289.912	289.964	63	62.963	63.037	12.4	302.40
300	300.000	300.052	299.912	299.964	70	69.963	70.037	14.4	314.40
310	310.000	310.052	309.912	309.964	70	69.963	70.037	14.4	324.40
315	315.000	315.052	314.912	314.964	70	69.963	70.037	14.4	329.40

Nominal Bore Diameter	Clearance Bore		Interference Bore		Keyway			"T"-DIM +0.30/-0.00	
	H7 Bore (+0.000/+0.057)		P7 bore (-0.041/-0.098)		Width (Js9)				
	Min	Max	Min	Max	+/- 0.0370	Min	Max		
320	320.000	320.057	319.902	319.959	70	69.963	70.037	14.4	334.40
330	330.000	330.057	329.902	329.959	70	69.963	70.037	14.4	344.40
340	340.000	340.057	339.902	339.959	80	79.963	80.037	15.4	355.40
350	350.000	350.057	349.902	349.959	80	79.963	80.037	15.4	365.40
355	355.000	355.057	354.902	354.959	80	79.963	80.037	15.4	370.40
360	360.000	360.057	359.902	359.959	80	79.963	80.037	15.4	375.40
370	370.000	370.057	369.902	369.959	80	79.963	80.037	15.4	385.40
380	380.000	380.057	379.902	379.959	80	79.963	80.037	15.4	395.40

Nominal Bore Diameter	Clearance Bore		Interference Bore		Keyway			"T"-DIM +0.30/-0.00	
	H7 Bore (+0.000/+0.057)		P7 Bore (-0.041/-0.098)		Width (Js9)				
	Min	Max	Min	Max	+/- 0.0435	Min	Max		
390	390.000	390.057	389.902	389.959	90	89.957	90.044	17.4	407.40
400	400.000	400.057	399.902	399.959	90	89.957	90.044	17.4	417.40

Nominal Bore Diameter	Clearance Bore		Interference Bore		Keyway			"T"-DIM +0.30/-0.00	
	H7 Bore (+0.000/+0.063)		P7 Bore (-0.045/-0.108)		Width (Js9)				
	Min	Max	Min	Max	+/- 0.0435	Min	Max		
410	410.000	410.063	409.892	409.955	90	89.957	90.044	17.4	427.40
420	420.000	420.063	419.892	419.955	90	89.957	90.044	17.4	437.40
430	430.000	430.063	429.892	429.955	90	89.957	90.044	17.4	447.40
440	440.000	440.063	439.892	439.955	90	89.957	90.044	17.4	457.40
450	450.000	450.063	449.892	449.955	100	99.957	100.044	19.5	469.50
460	460.000	460.063	459.892	459.955	100	99.957	100.044	19.5	479.50
470	470.000	470.063	469.892	469.955	100	99.957	100.044	19.5	489.50
480	480.000	480.063	479.892	479.955	100	99.957	100.044	19.5	499.50
490	490.000	490.063	489.892	489.955	100	99.957	100.044	19.5	509.50
500	500.000	500.063	499.892	499.955	100	99.957	100.044	19.5	519.50

## IEC Motor Frames Dimensional Data

### IEC Motor Frame Dimensional Data

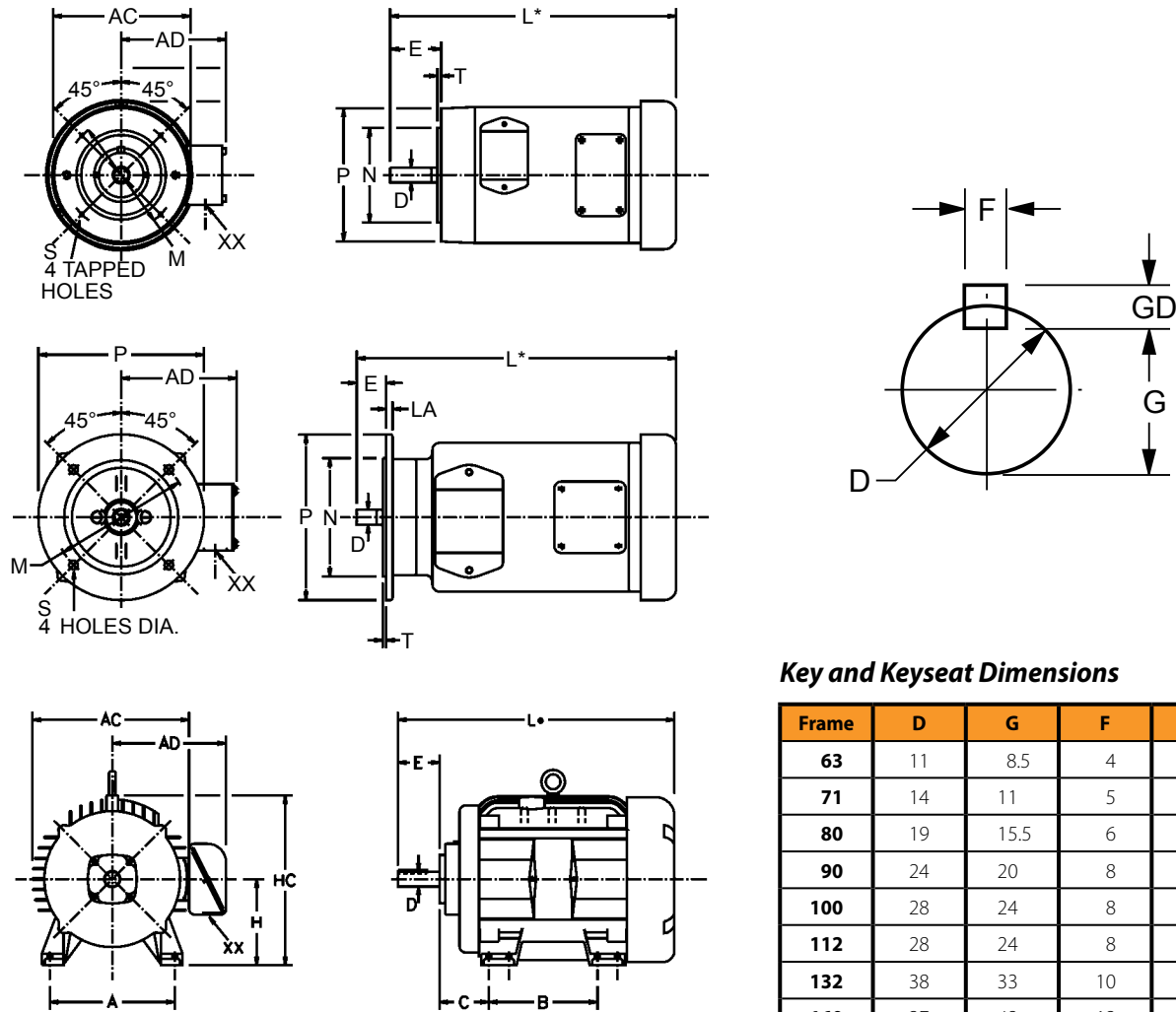
IEC Frame	Type	Foot Mounting				Shaft		BS Flange						B14 Face					General															
		A	B	C	H	D	E	LA	M	N	P	S	T	M	N	P	S	T	L	AC	AD	HC	XX											
63	300	<b>100</b>	<b>80</b>	<b>40</b>	<b>63</b>	<b>11</b>	<b>23</b>	<b>8</b>	<b>115</b>	<b>95</b>	<b>140</b>	<b>9</b>	<b>3</b>	<b>75</b>	<b>60</b>	<b>90</b>	M5	<b>2.5</b>	*	<b>119</b>	<b>102</b>	<b>121</b>	<b>13</b>											
		3.937	3.150	1.570	2.480	0.433	0.906	0.313	4.528	3.740	5.512	0.354	0.118	2.953	2.362	3.540		0.098		4.690	<b>116d</b>	4.760	5.375d	0.500										
71	300 400	<b>112</b>	<b>90</b>	<b>45</b>	<b>71</b>	<b>14</b>	<b>30</b>	<b>8</b>	<b>130</b>	<b>110</b>	<b>160</b>	<b>10</b>	<b>3.5</b>	<b>85</b>	<b>70</b>	<b>105</b>	M6	<b>2.5</b>	*	<b>119</b>	<b>102</b>	<b>131</b>	<b>18</b>											
		4.409	3.543	1.770	2.800	0.551	1.181	0.313	5.118	4.331	6.299	0.393	0.138	3.347	2.756	4.130		0.098		4.690	<b>145d</b>	5.140	5.880d	0.690										
80	400 500	<b>125</b>	<b>100</b>	<b>50</b>	<b>80</b>	<b>19</b>	<b>40</b>	<b>13</b>	<b>165</b>	<b>130</b>	<b>200</b>	<b>11</b>	<b>3.5</b>	<b>100</b>	<b>80</b>	<b>120</b>	M6	<b>3</b>	*	<b>145</b>	<b>116</b>	<b>152</b>	<b>22</b>											
		4.921	3.937	1.969	3.150	0.748	1.575	0.500	6.496	5.118	7.874	0.430	0.138	3.937	3.150	4.724		0.118		5.690	4.510	6	0.880											
90	S L	<b>140</b>	<b>100</b>	<b>56</b>	<b>90</b>	<b>24</b>	<b>50</b>	<b>13</b>	<b>165</b>	<b>130</b>	<b>200</b>	<b>12</b>	<b>3.5</b>	<b>115</b>	<b>95</b>	<b>140</b>	M8	<b>3</b>	*	<b>168</b>	<b>130</b>	<b>173</b>	<b>22</b>											
		5.511	3.937	2.205	3.543	0.945	1.969	0.500	6.496	5.118	7.874	0.472	0.138	4.530	3.740	5.512		0.118		6.614	5.120	6.810	0.880											
100	S L	<b>160</b>	<b>112</b>	<b>63</b>	<b>100</b>	<b>28</b>	<b>60</b>	<b>14</b>	<b>215</b>	<b>180</b>	<b>250</b>	<b>14</b>	<b>4</b>	<b>130</b>	<b>110</b>	<b>160</b>	M8	<b>3.5</b>	*	<b>200</b>	<b>149</b>	<b>180</b>	<b>27</b>											
		6.300	4.409	2.480	3.937	1.102	2.362	0.562	8.465	7.087	9.840	0.560	0.160	5.108	4.331	6.299		0.138		7.875	5.875	7.906	1.062											
112	S M	<b>190</b>	<b>114</b>	<b>70</b>	<b>112</b>	<b>28</b>	<b>60</b>	<b>14</b>	<b>215</b>	<b>180</b>	<b>250</b>	<b>14</b>	<b>4</b>	<b>130</b>	<b>110</b>	<b>160</b>	M8	<b>3.5</b>	*	<b>200</b>	<b>149</b>	<b>214</b>	<b>27</b>											
		7.480	4.488	2.760	4.409	1.102	2.362	0.562	8.465	7.087	9.840	0.560	0.160	5.108	4.331	6.299		0.138		7.875	5.875	8.437	1.062											
132	S M	<b>216</b>	<b>140</b>	<b>89</b>	<b>132</b>	<b>38</b>	<b>80</b>	<b>14</b>	<b>265</b>	<b>230</b>	<b>300</b>	<b>14</b>	<b>4</b>	<b>165</b>	<b>130</b>	<b>200</b>	M8	<b>3.5</b>	*	<b>243</b>	<b>187</b>	<b>256</b>	<b>27</b>											
		8.504	5.512	3.504	5.197	1.496	3.150	0.562	10.433	9.055	11.811	0.560	0.160	6.496	5.118	7.874		0.138		9.562	7.375	10.062	1.062											
160	M L	<b>254</b>	<b>210</b>	<b>108</b>	<b>160</b>	<b>42</b>	<b>110</b>	<b>20</b>	<b>300</b>	<b>250</b>	<b>350</b>	<b>19</b>	<b>5</b>	<b>215</b>	<b>180</b>	<b>250</b>	M12	<b>4</b>	*	<b>329</b>	<b>242</b>	<b>329</b>	<b>35</b>											
		10	8.268	4.252	6.299	1.654	4.331	0.787	11.811	9.842	13.780	0.748	0.200	8.465	7.087	9.840		0.160		12.940	9.510	12.940	1.375											
180	M L	<b>279</b>	<b>241</b>	<b>121</b>	<b>180</b>	<b>48</b>	<b>110</b>	—	<b>300</b>	<b>250</b>	<b>350</b>	<b>19</b>	<b>5</b>	—	—	—	—	—	*	<b>395</b>	<b>333</b>	<b>372</b>	<b>51</b>											
		10.984	9.488	4.764	7.087	1.890	4.331		11.811	9.842	13.780	0.748	0.200							15.560	13.120	14.640	2.008											
200	L M	<b>318</b>	<b>267</b>	<b>133</b>	<b>200</b>	<b>55</b>	<b>110</b>	—	<b>350</b>	<b>300</b>	<b>400</b>	<b>19</b>	—	—	—	—	—	—	*	<b>441</b>	<b>359</b>	<b>416</b>	<b>63</b>											
		12.520	10.512	5.236	7.874	2.165	4.331		13.780	11.811	15.748	0.748								17.375	14.125	16.375	2.500											
225	S M	<b>356</b>	<b>286</b>	<b>149</b>	<b>225</b>	<b>60</b>	<b>140</b>	—	<b>400</b>	<b>350</b>	<b>450</b>	<b>19</b>	—	—	—	—	—	—	*	<b>495</b>	<b>383</b>	<b>483</b>	<b>63</b>											
		14.016	11.260	5.866	8.858	2.362	5.512		15.748	13.780	17.716	0.748								19.488	15.079	19.016	2.500											
250	S M	<b>406</b>	<b>311</b>	<b>168</b>	<b>250</b>	<b>70</b>	<b>140</b>	—	—	—	—	—	—	—	—	—	—	—	*	<b>520</b>	<b>457</b>	<b>513</b>	<b>63</b>											
		15.984	12.244	6.614	9.843	2.756	5.512													20.472	17.992	20.197	2.500											
280	S M	<b>457</b>	<b>368</b>	<b>190</b>	<b>280</b>	<b>80</b>	<b>170</b>	—	<p style="text-align: center;">LEGEND</p> <p style="text-align: center;">Metric dimensions (millimeters) in bold. Inch dimensions in plain type.</p> <p style="text-align: center;">d = DC Motors</p> <p style="text-align: center;">1 mm = 0.03937 inches 1 inch = 25.40 mm</p>										—	*	<b>616</b>	<b>497</b>	<b>581</b>	<b>63</b>										
		17.992	14.488	7.485	11.025	3.150	6.693																							24.252	19.567	22.874	2.500	
315	S M	<b>508</b>	<b>406</b>	<b>216</b>	<b>315</b>	<b>85</b>	<b>170</b>	—																					—	*	<b>759</b>	<b>683</b>	<b>682</b>	<b>102</b>
		20	16	8.500	12.400	3.346	6.693																								29.900	26.880	26.840	4
355	S L	<b>610</b>	<b>500</b>	<b>254</b>	<b>355</b>	<b>85</b>	<b>170</b>	—																					—	*	<b>759</b>	<b>683</b>	<b>719</b>	<b>102</b>
		24	19.690	10	13.980	3.346	6.693														29.900	26.880	28.320	4										

Note: \* indicates: This dimension varies depending upon manufacturer.

## IEC Motor Frame Drawings

### Dimensional Data

#### IEC Motor Frame Drawings



Note: ■ Drawings represent standard TEFC general purpose motors. Dimensions are for reference only.

#### Key and Keyseat Dimensions

Frame	D	G	F	GD
63	11	8.5	4	4
71	14	11	5	5
80	19	15.5	6	6
90	24	20	8	7
100	28	24	8	7
112	28	24	8	7
132	38	33	10	8
160	37	42	12	8
180	48	42.5	14	9
200	55	49	16	10
225	60	53	18	11
250	65	67.5	20	12
280	80	71	22	14
315	85	76	22	14
355	85	76	22	14

## NEMA Quick Reference Chart - Inch Dimensional Data

### NEMA Quick Reference Chart - Inch

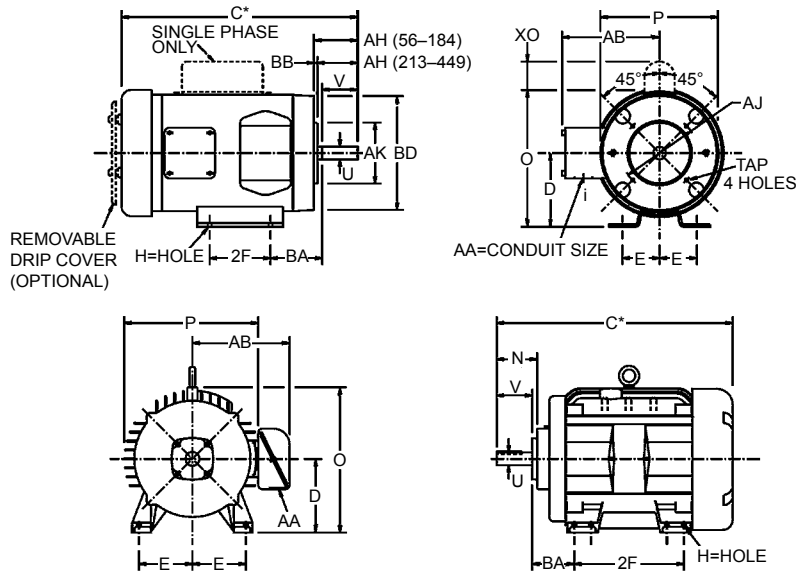
NEMA Frame	D	E	2F	H	N	O	P	U	V	AA	AB	AH	AJ	AK	BA	BB	BD	XO	TAP
42	2-5/8	1-3/4	1-11/16	9/32*	1-1/2	5	4-11/16	3/8	1-1/8	3/8	4-1/32	1-5/16	3-3/4	3	2-7/16	1/8	4-5/8	1-9/16	1/4-20
48	3	2-1/8	2-3/4	11/32*	1-7/8	5-7/8	5-11/16	1/2	1-1/2	1/2	4-3/8	1-11/16	3-3/4	3	2-1/2	1/8	5-5/8	2-1/4	1/4-20
56 56H	3-1/2	2-7/16	3 5	11/32*	2-7/16 2-1/8	6-7/8	6-5/8	5/8	1-7/8	1/2	5	2-1/16	5-7/8	4-1/2	2 3/4	1/8	6-1/2	2-1/4	3/8-16
143T 145T	3-1/2	2-3/4	4 5	11/32	2-1/2	6-7/8	6-5/8	7/8	2-1/4	3/4	5-1/4	2-1/8	5-7/8	4-1/2	2-1/4	1/8	6-1/2	2-1/4	3/8-16
182 184 182T 184T	4-1/2	3-3/4	4-1/2 5-1/2 4-1/2 5-1/2	13/32	2-11/16 2-11/16 3-9/16 3-9/16	8-11/16	7-7/8	7/8 7/8 1-1/8 1-1/8	2-1/4 2-1/4 2-3/4 2-3/4	3/4	5-7/8	2-1/8 2-1/8 2-5/8 2-5/8	5-7/8 5-7/8 7-1/4 7-1/4	4-1/2 4-1/2 8-1/2 8-1/2	2-3/4	1/8 1/8 1/4 1/4	6-1/2 6-1/2 9 9	2-3/8	3/8-16 3/8-16 1/2-13 1/2-13
213 215 213T 215T	5-1/4	4-1/4	5-1/2 7 5-1/2 7	13/32	3-1/2 3-1/2 3-7/8 3-7/8	10-1/4	9-9/16	1-3/8 1-3/8 1-3/8 1-3/8	3 3 3-3/8 3-3/8	3/4	7-3/8	2-3/4 2-3/4 3-1/8 3-1/8	8-1/2	8-1/2	3-1/2	1/4	9	2-3/4	1/2-13
254U 256U 254T 256T	6-1/4	5	5-1/8 10 8-1/8 10	17/32	4-1/16 4-1/16 4-5/16 4-5/16	12-7/8	12-15/16	1-3/8 1-3/8 1-5/8 1-5/8	3-3/4 3-3/4 4 4	1	9-5/8	3-1/2 3-1/2 3-3/4 3-3/4	7-1/4	8-1/2	4-1/4	1/4	10	—	1/2-13
284U 286U 284T 286T 284TS 286TS	7	5-1/2	9-1/2 11 9-1/2 11 9-1/2 11	17/32	5-7/8 5-7/8 4-7/8 4-7/8 3-3/8 3-3/8	14-5/8	14-5/8	1-5/8 1-5/8 1-7/8 1-7/8 1-5/8 1-5/8	4-7/8 4-7/8 4-5/8 4-5/8 3-1/4 3-1/4	1-1/2	13-1/8	4-5/8 4-5/8 4-3/8 4-3/8 3 3	9	10-1/2	4-3/4	1/4	11-1/4	—	1/2-13
324U 326U 324T 326T 324TS 326TS	8	6-1/4	10-1/2 12 10-1/2 12 10-1/2 12	21/32	5-7/8 5-7/8 5-1/2 5-1/2 3-15/16 3-15/16	16-1/2	16-1/2	1-7/8 1-7/8 2-1/8 2-1/8 1-7/8 1-7/8	5-5/8 5-5/8 5-1/4 5-1/4 3-3/4 3-3/4	2	14-1/8	5-3/8 5-3/8 5 5 3-1/2 3-1/2	11	12-1/2	5-1/4	1/4	13-3/8	—	5/8-11
364U 365U 364T 365T 364TS 365TS	9	7	11-1/4 12-1/4 11-1/4 12-1/4 11-1/4 12-1/4	21/32	6-3/4 6-3/4 6-1/4 6-1/4 4 4	18-1/2	18-1/4	2-1/8 2-1/8 2-3/8 2-3/8 1-7/8 1-7/8	6-3/8 6-3/8 5-7/8 5-7/8 3-3/4 3-3/4	2-1/2	15-1/16	6-1/8 6-1/8 5-5/8 5-5/8 3-1/2 3-1/2	11	12-1/2	5-7/8	1/4	13-3/8	—	5/8-11
404U 405U 404T 405T 404TS 405TS	10	8	12-1/4 13-3/4 12-1/4 13-3/4 12-1/4 13-3/4	13/16	7-3/16 7-3/16 7-5/16 7-5/16 4-1/2 4-1/2	20-5/16	1/8 20 22-3/8 22-3/8	2-3/8 2-3/8 2-7/8 2-7/8 2-1/8 2-1/8	7-1/8 7-1/8 7-1/4 7-1/4 4-1/4 4-1/4	3	18	6-7/8 6-7/8 7 7 4 4	11	12-1/2	6-5/8	1/4	13-7/8	—	5/8-11
444U 445U 444T 445T 447T 449T 444TS 445TS 447TS 449TS	11	9	14-1/2 16-1/2 14-1/2 16-1/2 20 25 14-1/2 16-1/2 20 25	13/16	8-5/8 8-5/8 8-1/2 8-1/2 8-15/16 8-15/16 5-3/16 5-3/16 4-15/16 4-15/16	22-7/8 22-7/8 22-7/8 22-7/8 22-15/16 22-15/16 22-7/8 22-7/8 22-15/16 22-15/16	22-3/8 22-3/8 22-3/8 22-3/8 22-3/8 22-3/8 22-3/4 22-3/4 22-3/8 22-3/8	2-7/8 2-7/8 3-3/8 3-3/8 3-3/8 3-3/8 2-3/8 2-3/8 2-3/8 2-3/8	8-5/8 8-5/8 8-1/2 8-1/2 8-1/2 8-1/2 4-3/4 4-3/4 4-3/4 4-3/4	3 3 3 3 4NPT 4NPT	19-9/16 19-9/16 19-9/16 19-9/16 21-11/16 21-11/16 19-9/16 19-9/16 21-11/16 21-11/16	8-3/8 8-3/8 8-1/4 8-1/4 8-1/4 8-1/4 4-1/2 4-1/2 4-1/2 4-1/2	14	16	7-1/2	1/4	16-3/4	—	5/8-11

Note: ■ \* indicates: Slot.

## NEMA Motor Frame

### Dimensional Data

#### NEMA Motor Frame Dimensions



Notes: ■ Drawings represent standard TEFC general purpose motors.  
 ■ Dimensions are for reference only.

U	R	S
NEMA Shaft	Keyseat Dimensions	
3/8	21/64	FLAT
1/2	29/64	FLAT
5/8	33/64	3/16
7/8	49/64	3/16
1-1/8	63/64	1/4
1-3/8	1-13/64	5/16
1-5/8	1-13/32	3/8
1-7/8	1-19/32	1/2
2-1/8	1-27/32	1/2
2-3/8	2-1/64	5/8
2-1/2	2-3/16	5/8
2-7/8	2-29/64	3/4
3-3/8	2-7/8	7/8
3-7/8	3-5/16	1

NEMA C-Face	BA Dimensions
143-5TC	2-3/4
182-4TC	3-1/2
213-5TC	4-1/4
254-6TC	4-3/4

5000 Frame	D	E	2F	H	O	P	U	V	AA	AB	BA
5007S	12-1/2	10	22	15/16	26-27/32	30	2-1/2	6-1/2	4-NPT	26-7/8	8-1/2
5007L	12-1/2	10	22	15/16	26-27/32	30	3-7/8	11-1/8	4-NPT	26-7/8	8-1/2
5009S	12-1/2	10	28	15/16	26-27/32	30	2-1/2	6-1/2	4-NPT	26-7/8	8-1/2
5009L	12-1/2	10	28	15/16	26-27/32	30	3-7/8	11-1/8	4-NPT	26-7/8	8-1/2
5011S	12-1/2	10	36	15/16	26-27/32	30	2-1/2	6-1/2	4-NPT	26-7/8	8-1/2
5011L	12-1/2	10	36	15/16	26-27/32	30	3-7/8	11-1/8	4-NPT	26-7/8	8-1/2

#### Frames Prior to 1963

Frame	D	E	F	N	U	V	BA
66	4-1/8	2-15/16	2-1/2	2-1/4	3/4	2-1/4	3-1/8
203	5	4	2-3/4	2-7/16	3/4	2	3-1/8
204			3-1/4				
224	5-1/2	4-1/2	3-3/8	3-1/4	1	3	3-1/2
225			3-3/4				
254	6-1/4	5	4-1/8	3-7/16	1-1/8	3-3/8	4-1/4
284	7	5-1/2	4-3/4	4-1/4	1-1/4	3-3/4	4-3/4
324	8	6-1/4	5-1/4	5-3/8	1-5/8	4-7/8	5-1/4
326			6				
364	9	7	5-5/8	5-5/8	1-78/83	5-3/8	5-7/8
365			6-1/8				
404	10	8	6-1/8	6-3/8	2-1/8	6-7/8	6-5/8
405			6-7/8				
444	11	9	7-1/4	7-1/8	2-3/8	6-7/8	7-1/2
445			8-1/4				
504	12-1/2	10	8	8-5/8	2-7/8	8-3/8	8-1/2
505			9				