

Lovejoy flexible couplings and power transmission products address critical operational issues that face today's wastewater treatment facilities. We provide solutions that are resistant to corrosion, require no lubrication, lower maintenance and downtime costs, and reduce noise levels – all with the level of quality, value, and customer service you expect from Lovejoy.

COMMON APPLICATIONS

Wastewater Aeration
Digester Gas Boosters
Cooling Towers
Quiet Tanks

Bar Screens
Comminutor
Pumps
Conveyors

Grid Couplings

- Horizontal and vertical split cover designs
- Interchangeable with industry standards up to size 1200
- Available in 19 sizes with a maximum bore of 13" and a maximum torque of 1,650,000 in-lbs
- Provides torsional damping
- Drop-out spacers for pump systems



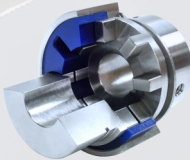
HercuFlex® Gear Couplings

- Bore sizes from 7/16" to 42"
- Special styles available including spacer, floating shaft, and stainless steel
- Interchangeable with industry standards
- Torque capacity to 47,000,000 in-lbs
- Vari-Crown® teeth increase coupling wear life
- High performance gear for extreme high speed applications, offering a reduced moment of inertia



QUICK FLEX® Couplings

- Transmit the same or higher torque than a gear, grid, chain or elastomeric coupling with similar dimensions
- Easy to install and requires no lubrication
- Replace insert without moving hubs



Shaft Locking Devices

- Zero backlash
- No effect from dynamic, reversing or shock loads
- Keyless locking of shafts to hubs
- High torque transmission
- Reduces maintenance time
- Easy installation and disassembly
- Adjustable for easy radial timing and axial alignment



Disc Couplings

- No need for lubrication
- Ability to inspect without disassembly
- Torsionally rigid without any backlash
- No wearing parts
- High resistance to harsh environments
- Bore range to 15.25 inches
- 3,309,000 in-lbs of maximum torque
- Meets API 610, 671 standards
- Special styles available such as close coupled, spacer, drop out and adjustable shaft



S-Flex Endurance™

- Elastomer-in-shear design
- Torque capacity up to 72,480 in-lbs
- Maximum bore of 5-1/2"
- Three sleeve materials provide flexibility in adapting to application requirements
- Fully interchangeable with industry standards
- Wide selection of both inch and metric finished bores



RunRight® Motor Bases

- Maintenance free tensioning provides constant torque and less energy consumption
- Design compensates for startup belt load, absorbs load impact during operation while providing stability for proper alignment
- Increases life of the drive system
- Greatly simplifies belt changes, reducing costs for labor and downtime

