

Lovejoy flexible couplings and power transmission products address critical operational issues that face today's aggregate producer. We provide solutions that are resistant to corrosion, require no lubrication, lower maintenance and downtime costs, and reduce noise levels—all with the quality, value and customer service you expect from Lovejoy.

COMMON APPLICATIONS

Shaker Screens
Excavators
Crawlers
Dozers
Conveyors
Crushers

Skid-Steer Loaders
Aerial Lifts
Drill Rigs
Compressors
Mining Trucks

HercuFlex® Gear Couplings

- Bore sizes from 7/16" to 42"
- Special styles available including spacer, floating shaft, and stainless steel
- Interchangeable with industry standards
- Torque capacity to 47,000,000 in-lbs
- Vari-Crown® teeth increase coupling wear life
- High performance gear for extreme high speed applications, offering a reduced moment of inertia



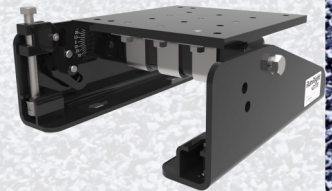
Grid Couplings

- Horizontal and vertical split cover designs
- Interchangeable with industry standards up to size 1200
- Available in 19 sizes with a maximum bore of 13" and a maximum torque of 1,650,000 in-lbs
- Provides torsional damping
- Drop-out spacers for pump systems



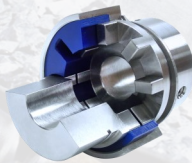
RunRight® Motor Bases

- Maintenance free tensioning provides constant torque and less energy consumption
- Design compensates for startup belt load, absorbs load impact during operation while providing stability for proper alignment
- Increases life of the drive system
- Greatly simplifies belt changes, reducing costs for labor and downtime



QUICK FLEX® Couplings

- Transmit the same or higher torque than a gear, grid, chain or elastomeric coupling with similar dimensions
- Easy to install and requires no lubrication
- Replace insert without moving hubs



Shaft Locking Devices

- Zero backlash
- No effect from dynamic, reversing or shock loads
- Keyless locking of shafts to hubs
- High torque transmission
- Reduces maintenance time
- Easy installation and disassembly
- Adjustable for easy radial timing and axial alignment



Rigid Compression Couplings

- Provide durable connection between two shafts of the same size
- Steel design make them well suited for the toughest applications
- Easy to install and remove



Jaw In-Shear Couplings

- Fast and easy assembly and element replacement
- 2° angular misalignment
- Radially removable insert
- No tools needed to change element



RunRight® Oscillating Mounts

- Lasts considerably longer and eliminates the safety hazards associated with conventional coil springs
- Controls vibration in shaker and screen systems
- No metal to metal contact and resistant to harsh aggregate / mining environments
- Reduced substructure noise helping to meet MSHA noise reduction regulations

