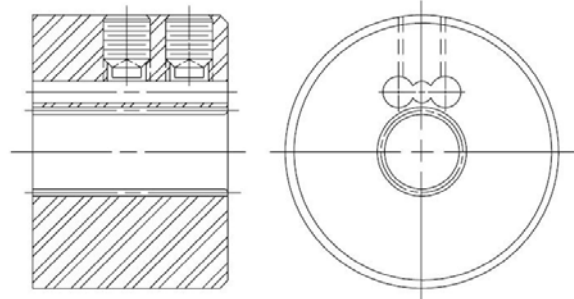




Installation Instructions for Lovejoy's L-LOC Spline Shaft Clamping Feature



INSTALLATION PROCEDURES FOR INSTALLING HUBS WITH THE LOVEJOY L-LOC SPLINE CLAMPING FEATURE

When tightening the set screws in the L-LOC option, ensure the spline shaft is fully engaged and completely under both L-LOC set screws. **If the spline shaft is not long enough to extend under one of the set screws, DO NOT tighten that set screw.** Some cylindrical hubs may only have a single L-LOC set screw. The spline shaft must extend fully beneath that set screw before tightening. For torque values, see the chart below.

L-LOC Feature Inch Set Screw Torque	5/16-18 UNC 13 ft-lbs	3/8-16 UNC 23 ft-lbs	1/2-13 UNC 48 ft-lbs	5/8-11 UNC 96 ft-lbs
L-LOC Feature Metric Set Screw Torque	M10 20 ft-lbs	M12 30 ft-lbs	M16 90 ft-lbs	M20 150 ft-lbs

L-LOC Features

- It eliminates premature spline shaft maintenance or replacement.
- There's reduced stress on equipment components.
- Quick and easy assembly and/or removal.
- Improves effectiveness in connection between shaft and hub.
- Helps reduce equipment noises that would normally be related to couplings